

# ***Hustler® Raptor® SD 48" CE Parts Manual***



**HUSTLER®**  
TURF EQUIPMENT

200 South Ridge Road

Hesston, Kansas

67062



---

# Table of Contents

## General Information

Service Literature . . . . .	1-1
Options Available From Your Dealer. . . . .	1-1
Using This Manual . . . . .	1-1
Standard Torques . . . . .	1-2

## Section 2

Frame . . . . .	2-2
Fenders & Instrument Panel . . . . .	2-4
Battery. . . . .	2-6

## Section 3

Hydraulic System . . . . .	3-2
Transmission Assembly . . . . .	3-4
Transmission Service Parts . . . . .	3-8
Steering & Brake. . . . .	3-10
Steering Cover Assembly . . . . .	3-12

## Section 4

Wheel & Tire . . . . .	4-2
Front Tire Breakdown—13 X 5.0. . . . .	4-4
Front Tire Breakdown—13 X 6.5. . . . .	4-6
Drive Wheel Breakdown . . . . .	4-8

## Section 5

Engine. . . . .	5-2
Engine Service Parts. . . . .	5-6
Fuel System . . . . .	5-8
Fuel Tank Service Parts . . . . .	5-10

## Section 6

48" Service Deck. . . . .	6-2
48" Deck Pulleys & Spindles. . . . .	6-4
48" Deck . . . . .	6-6
Deck Lift—Right Side . . . . .	6-8
Deck Lift—Left Side . . . . .	6-10

## Section 7

Seat. . . . .	7-2
Seat Service Parts . . . . .	7-4





---

# General Information

This manual covers Hustler® Raptor® SD model **932566CE**.

---

## **Service Literature**

<b>PART NO.</b>	<b>DESCRIPTION</b>
604856CE	OPERATOR'S MANUAL
118959	WARRANTY STATEMENT
118650	SERVICE MANUAL

---

## **Options Available From Your Dealer**

<b>PART NO.</b>	<b>DESCRIPTION</b>
119101	48" MULCH KIT
120608	LIGHT KIT
333724	STEERING LEVER EXTENSION
933028	2-BAG CATCHER KIT
119597	ENGINE GUARD KIT
600213	FLEX FORKS KIT

*Note: When ordering parts, you must use the part number as shown for each part, not the index number. Always give the model and serial number to your parts and service representative.*

*Note: Items sold in bulk such as seals and hoses are sold by the foot.*

---

## **Using This Manual**

*This manual is part of a service package for the Hustler® mowers. Use of this manual in conjunction with other Hustler® mower and component manuals will provide the information necessary to service and maintain Hustler® mowers.*

*This Parts Manual provides a complete parts listing for the unit. Use this manual when ordering parts. Illustrations used were current at the time of printing, but subsequent production changes may cause your machine to vary slightly in detail. Excel Industries, Inc. reserves the right to redesign and change the machine as deemed necessary, without notification. If a change has been made to your machine which is not reflected in this parts manual, see your authorized dealer for current information and parts.*

*The Service Manual is a service guide for use by Service Technicians. It provides the necessary information needed to perform normal maintenance requirements on these units.*

*The Operator's Manual provides fundamental operational information and operational safety that is needed when operating the mower.*

*The component manuals are furnished by the various manufacturers to be used for the troubleshooting and servicing of their products.*

---

## **Hardware Description Codes & Abbreviations**

The following codes are used throughout this parts manual. Refer to this list when ordering parts.

<b>ABBREVIATION</b>	<b>DESCRIPTION</b>	<b>ABBREVIATION</b>	<b>DESCRIPTION</b>
CB	CARRIAGE BOLT	MB	MACHINE BUSHING
CE	CLEVIS PIN	MS	MACHINE SCREW
CN	CLIP NUT	NT	NUT
CP	COTTER PIN	SC	SELF TAPPING CAP SCREW
CS	CAP SCREW	SH	SOCKET HEAD
CW	CUP WASHER	SB	SHOULDER BOLT
FDRW	FENDER WASHER	SS	SET SCREW
FW	FLAT WASHER	OD	OUTSIDE DIAMETER
HX	HEX HEAD	ID	INSIDE DIAMETER
LW	LOCK WASHER		

## **Standard Torques**

The following chart lists the standard torque values for the threaded fasteners found in this manual. Torque all cap screws, nuts and set screws to these values unless a different torque is shown in the Notes section next to the fastener.

<b>SIZE</b>	<b>FT-LBS</b>	<b>N-M</b>	<b>SIZE</b>	<b>FT-LBS</b>	<b>N-M</b>
.250	8.2	11.1	M3	1	1.3
.312	17	23	M4	2.2	3
.375	30	40	M5	4.5	6.1
.438	48	65	M6	7.7	10.4
.500	73	99	M8	18.5	25
.562	105	143	M10	37	50
.625	145	200	M12	64	87
.750	260	350	M14	80	108.5
.875	420	565	M16	160	215
1.00	625	850	M20	320	435
			M24	555	750

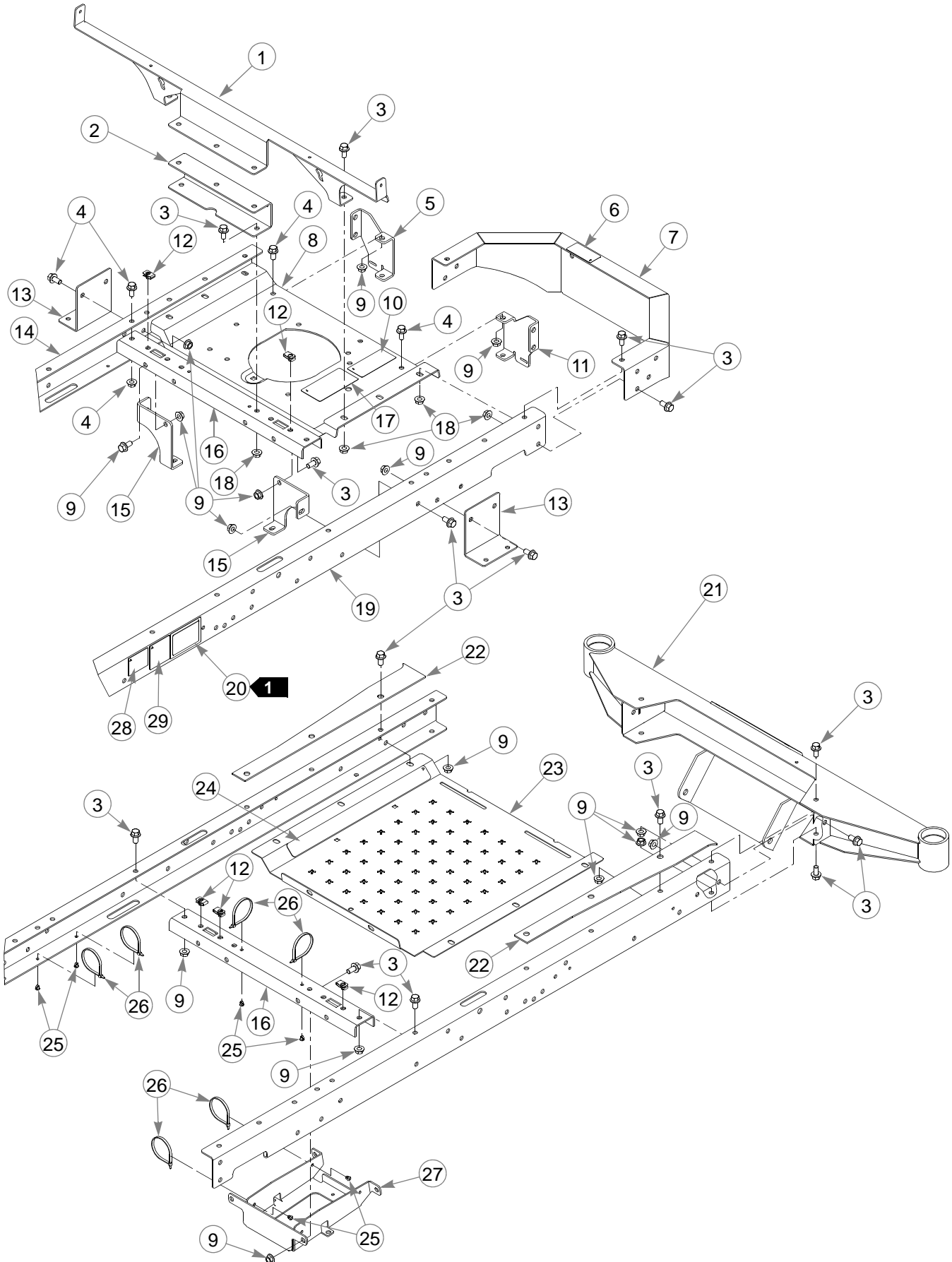
---

---

## Section 2

Frame .....	2-2
Fenders & Instrument Panel .....	2-4
Battery .....	2-6

# Frame



---

# **Frame**

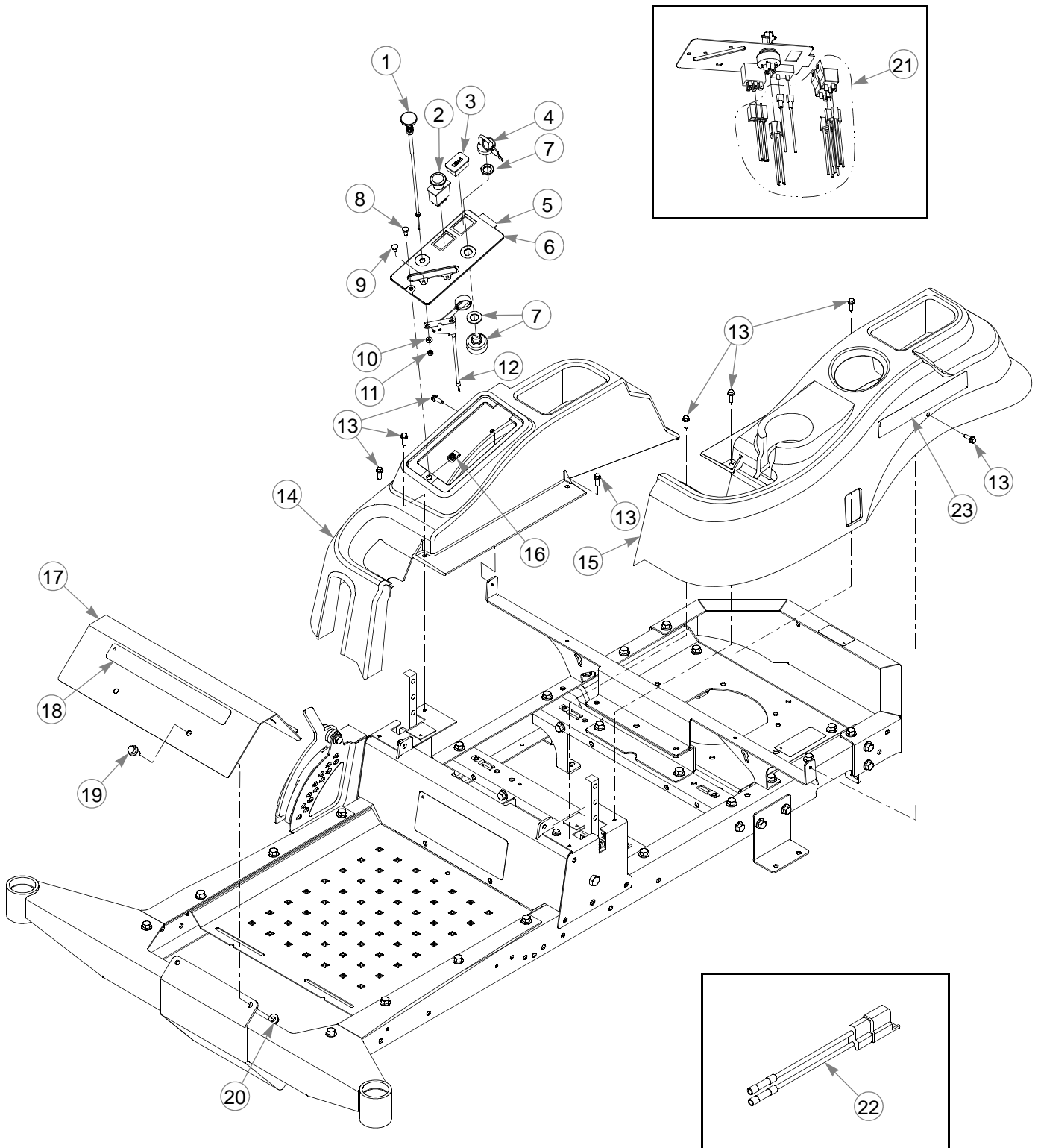
INDEX NO.	PART NO.	QTY.	DESCRIPTION
1	118539	1	SEAT SUPPORT
2	118538	1	SPRING SUPPORT
3	029629	10	CS .375-16 X .75 HX FLK
4	604176	30	CS .375-16 X .75 HX FLK PLN
5	552564	1	RS REAR BRACKET
6	602041	1	HOT DECAL
7	552217	1	BUMPER (WITH DECAL)
8	551858	1	ENGINE PLATE (WITH DECALS)
9	604177	30	NT .375-16 HX FLK PLN
10	601967	1	ENGINE COMPARTMENT DECAL
11	552565	1	LS REAR BRACKET
12	601982	5	CN .250-20 X .15 MAX THK
13	552566	2	HYDRO BRACKET
14	116119	1	RS FRAME CHANNEL
15	552567	2	RS FRONT BRACKET
16	551861	2	CROSS SUPPORT
17	600899	1	PUMP BELT WARNING DECAL
18	016899	10	NT .375-16 HX FLK ZNYC
19	551868	1	LS FRAME CHANNEL (WITH DECALS)
20	N/A	1	SERIAL NUMBER / SPEC DECAL
21	552568	1	FRONT CROSS FRAME
22	552569	2	FAIRING
23	551865	1	FOOT PAN (WITH DECAL)
24	601981	1	SAFE OPERATION DECAL
25	604307	6	PUSH BUTTON MOUNT
26	000331	6	WIRE TIE
27	552570	1	BATTERY TRAY
28	776310	1	CE MARK DECAL
29	789776CE	1	CE 105 DBA LIMIT DECAL

---

## **NOTES:**

1. Serial number decal. In the event the serial number decal becomes damaged or illegible, please contact your dealer to order a replacement.
2. Torque all the hardware to a minimum of 45 N-m.

# **Fenders & Instrument Panel**



---

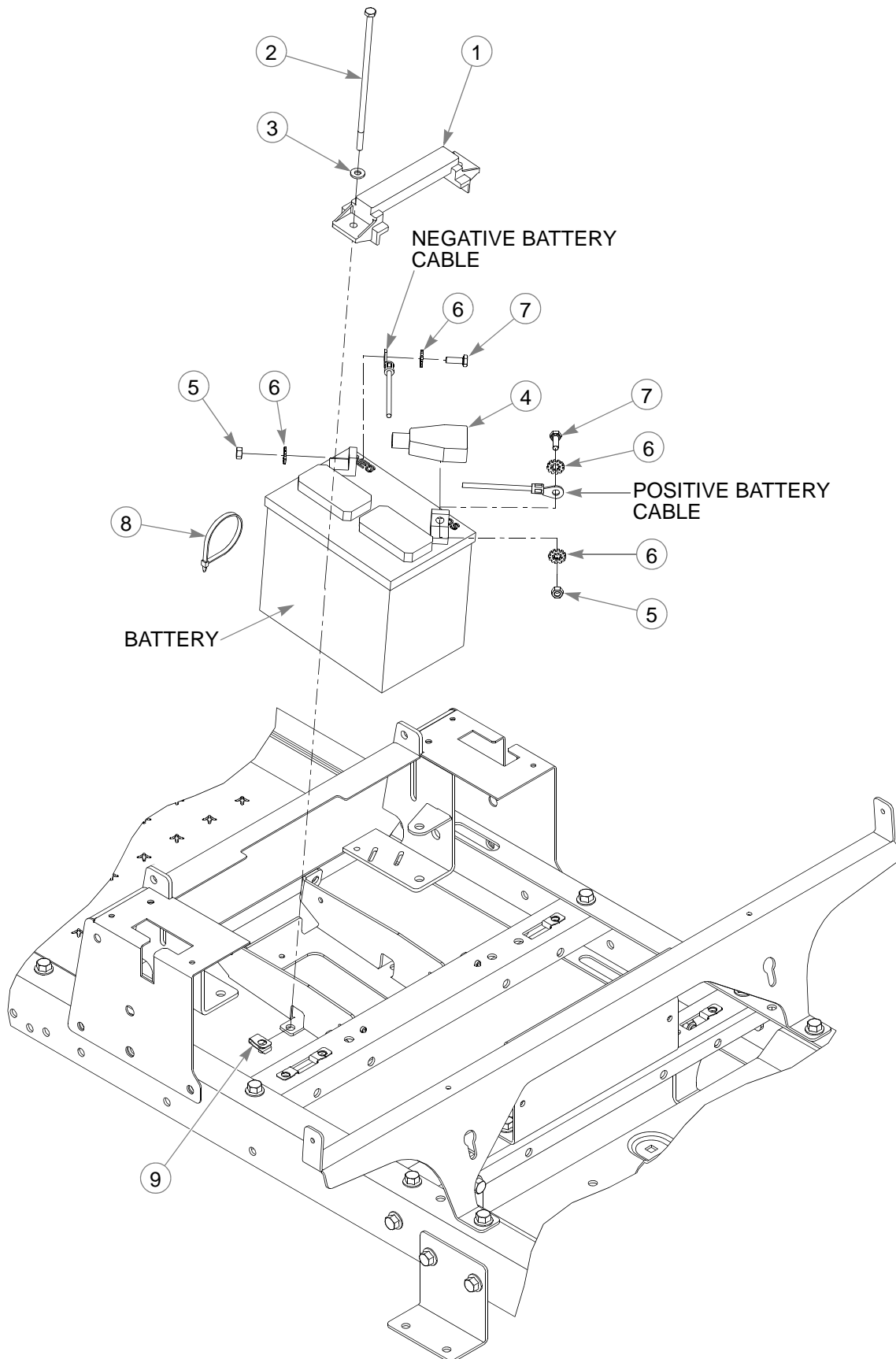
## **Fenders & Instrument Panel**

INDEX NO.	PART NO.	QTY.	DESCRIPTION
1	601097	1	CHOKE CABLE
2	776476	1	PTO SWITCH
3	769166	1	HOUR METER
4	785808	1	KEY ASSEMBLY
5	552300	1	INSTRUMENT PANEL (WITH DECAL)
6	604889	1	INSTRUMENT PANEL DECAL
7	045898	1	IGNITION SWITCH
8	055939	1	CS .250-20 X .75 HX G5
9	601098	2	CB 10-24 X .500 ZYNC
10	704932	2	FW .219 X .500 X .048 ZNYC
11	059832	2	NT #10-24 HX NL ZN
12	601096	1	THROTTLE CABLE
13	604324	8	CS .250-20 X .75 HX FLG
14	552809	1	RS FENDER (WITH DECAL)
15	552810	1	LS FENDER (WITH DECAL)
16	601982	1	CN .250-20 X .15 MAX THK
17	552414	1	FOOTREST (WITH DECAL)
18	602407	1	HUSTLER ID DECAL
19	029629	2	CS .375-16 X .75 HX FLK
20	016899	2	NT .375-16 HX FLK ZNYC
21	604876	1	WIRE HARNESS
22	114052	1	CLUTCH CONNECTOR REPAIR KIT
23	604388	2	HUSTLER DECAL

---

### **NOTES:**

# Battery





---

# **Battery**

INDEX NO.	PART NO.	QTY.	DESCRIPTION
1	604178	1	TIE DOWN STRAP
2	604465	2	CS 0.250-20 X 7.50 HX G5
3	768515	2	FW .281 X .625 X .051/.080 HD ZN/YL
4	771428	1	RED BATTERY CABLE BOOT
5	024927	2	NT .250-20 HX G5 ZNYC
6	029868	4	LW .250 INT-EXT TOOTH Z
7	055939	2	CS .250-20 X .75 HX G5
8	000331	2	WIRE TIE
9	601982	2	CN .250-20 X .15 MAX THK

---

## **NOTES:**

1. When performing service on the mower, disconnect the negative battery cable and do not reconnect it to the battery until the engine is ready to be started.

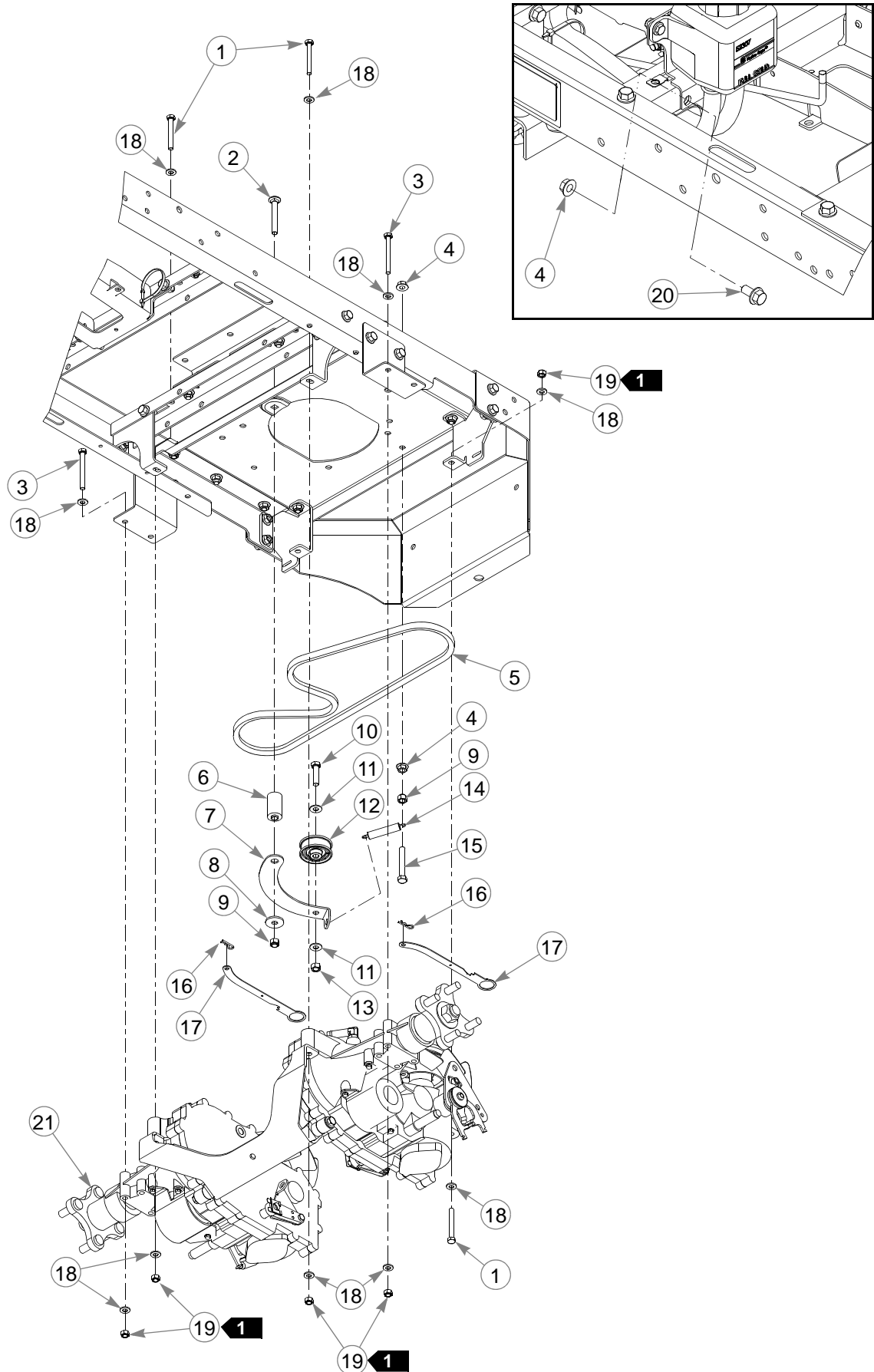


---

## Section 3

Hydraulic System . . . . .	3-2
Transmission Assembly . . . . .	3-4
Transmission Service Parts . . . . .	3-8
Steering & Brake . . . . .	3-10
Steering Cover Assembly . . . . .	3-12

# Hydraulic System



---

# **Hydraulic System**

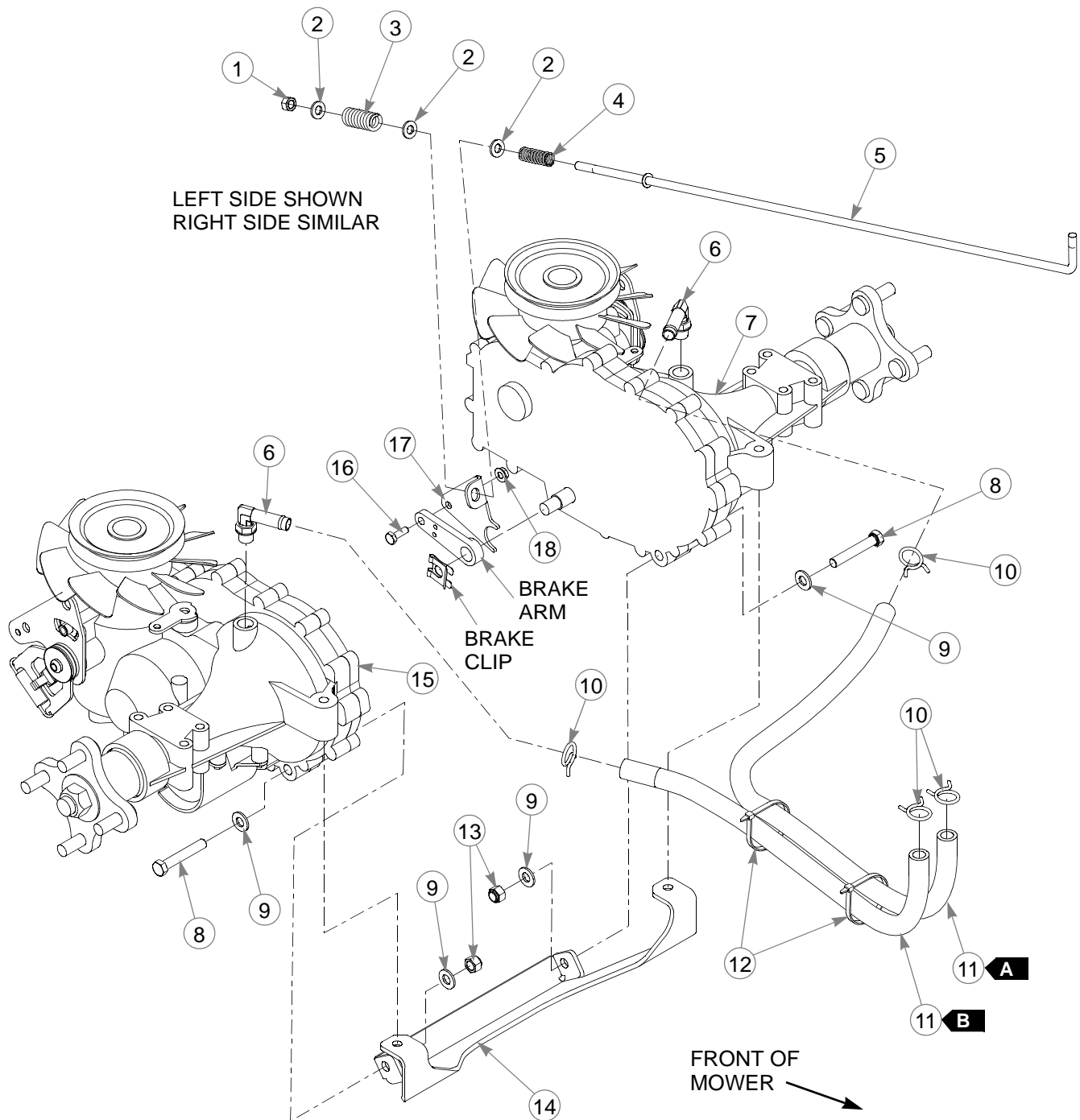
INDEX NO.	PART NO.	QTY.	DESCRIPTION
1	710087	4	CS .312-18 X 2.50 HX G5
2	601887	1	CB .375-16 X 2.75 STD ZN
3	043067	4	CS .312-18 X 3.00 HX G5 Z
4	016899	3	NT .375-16 HX FLK ZNYC
5	603907	1	DRIVE BELT
6	604714	1	IDLER SPACER
7	116287	1	IDLER ARM
8	712893	1	FW .406 X 1.25 X .12 HRD Z
9	086660	2	NT .375-16 NL G5
10	080655	1	CS .375-16 X 1.50 HX G5
11	767954	2	FW .406 X .812 X .060 SAE
12	604491	1	PULLEY 2.0" IDLER
13	054502	1	NT .375-16 HX G5 ZNY
14	604490	1	SPRING
15	604487	1	CS .375-16 X 2.5 FULTH
16	706549	2	HP .080D X 1.19
17	118310	2	TOW VALVE LINK
18	768523	16	FW .343 X .687 X .051/.080H
19	058776	8	NT 0.312-18 NL G5
20	029629	1	CS .375-16 X .75 HX FLK
21	N/A	1	TRANSMISSION ASSEMBLY

---

## **NOTES:**

1. Torque to 23 N-m.

# Transmission Assembly





---

# **Transmission Assembly**

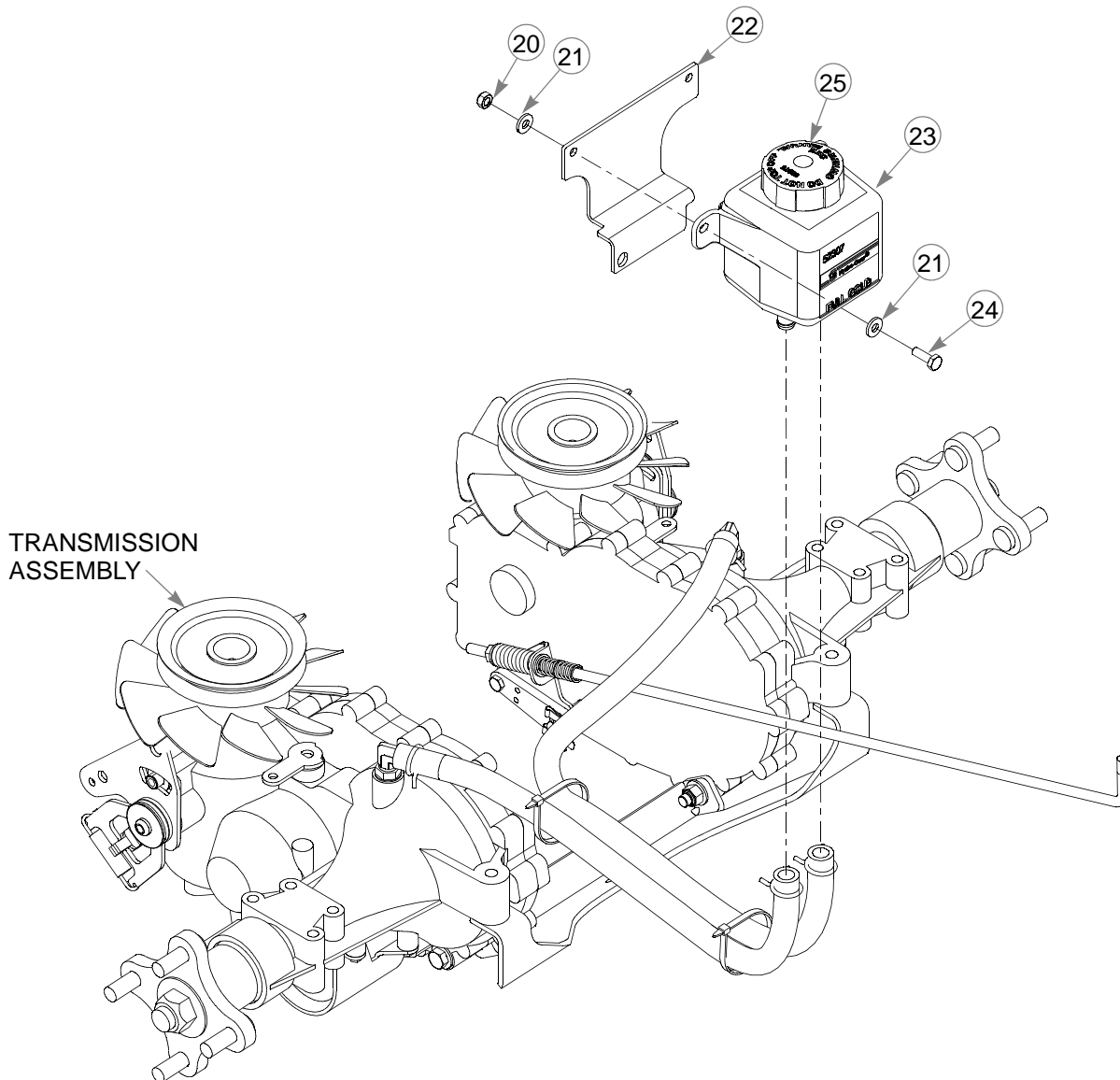
INDEX NO.	PART NO.	QTY.	DESCRIPTION
1	058776	2	NT .312-18 HX NL G5
2	768523	6	FW .343 X .687 X .051/.080H
3	601051	2	OVERTRAVEL SPRING
4	601131	2	SPRING
5	604667	2	ROD BRAKE ACTUATOR
6	601219	2	FITTING, 90 - 9/16 SAE
7	604709	1	LS TRANSMISSION
8	056036	2	CS .375-16 X 2.25 HX G5
9	767954	4	FW .406 X .812 X .060 SAE
10	601001	4	SPRING CLAMP
11	787713	119 cm	HOSE, 0.50" LOW PRESSURE
12	000331	2	WIRE TIE
13	086660	2	NT .375-16 NL G5
14	118942	1	CROSS BRACE
15	604708	1	RS TRANSMISSION
16	055939	2	CS .250-20 X .75 HX G5
17	109203	1	LS BRAKE SPRING LINK
18	016816	2	NT .250-20 HX FL LK ZNY
19	109202	1	RS BRAKE SPRING LINK (NOT SHOWN)

---

## NOTES:

TRANSMISSION TO TANK HOSE LENGTHS		
<b>A</b> 	71 cm	LS TRANSMISSION
<b>B</b> 	48 cm	RS TRANSMISSION

# Transmission Assembly



INDEX NO.	PART NO.	QTY	DESCRIPTION
20	068551	2	NT .250-20 HX ZY NL
21	768515	4	FW .281 X .625 X .051/.080 HD ZN/YL
22	118284	1	EXPANSION TANK MOUNT
23	601996	1	OVERFLOW TANK
24	055939	2	CS .250-20 X .75 HX G5
25	600767	1	OVERFLOW TANK CAP

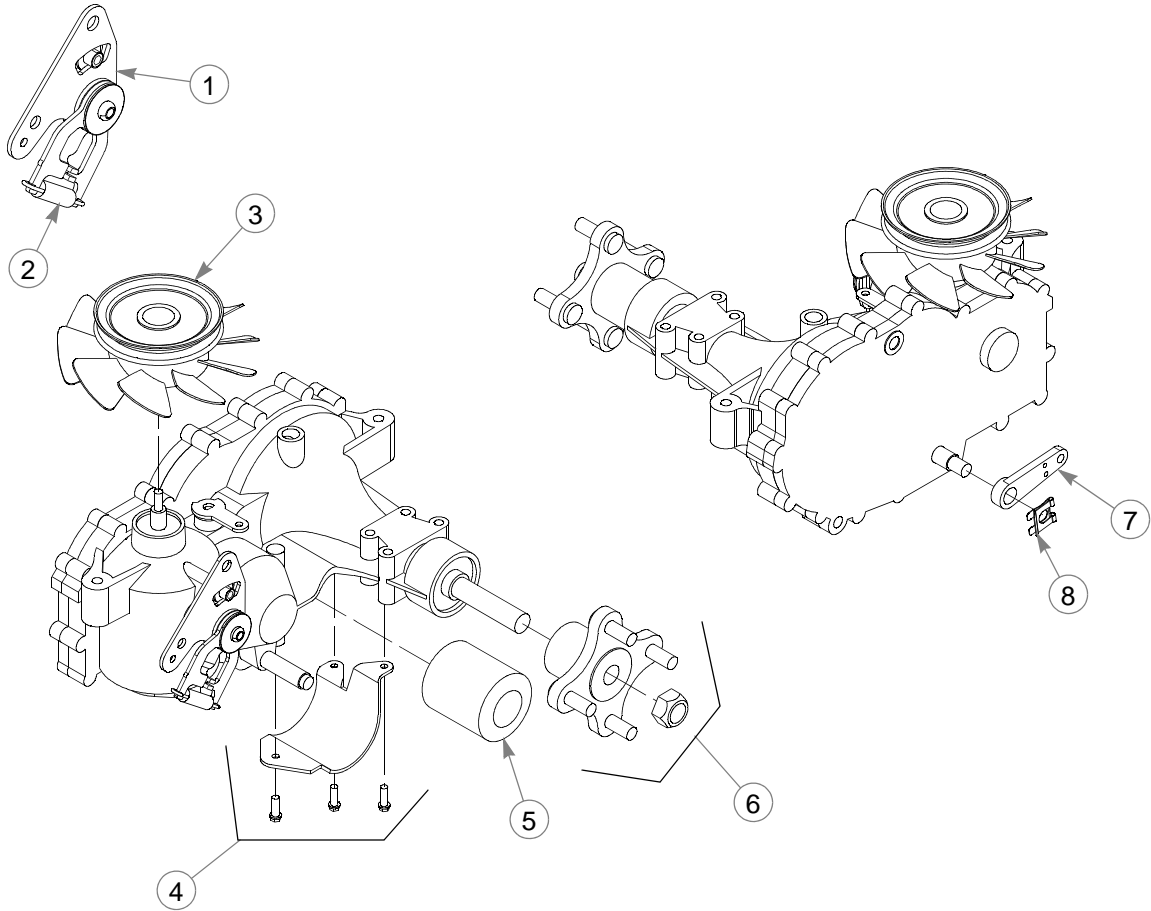
## NOTES:



---

**This page intentionally left blank.**

# **Transmission Service Parts**



---

# **Transmission Service Parts**

## **604708 RIGHT SIDE TRANSMISSION**

<b>INDEX NO.</b>	<b>PART NO.</b>	<b>QTY.</b>	<b>DESCRIPTION</b>
1	604901	1	HG RTN CW
2	604903	1	HG RTN SPRING
3	602094	1	FAN/PULLEY KIT
4	600975	1	LS FILTER GUARD (WITH HARDWARE)
5	600976	1	OIL FILTER
6	600970	1	4 BOLT HUB KIT (WITH HUB NUT)
7	601221	1	BRAKE ARM
8	600972	1	RETAINING CLIP

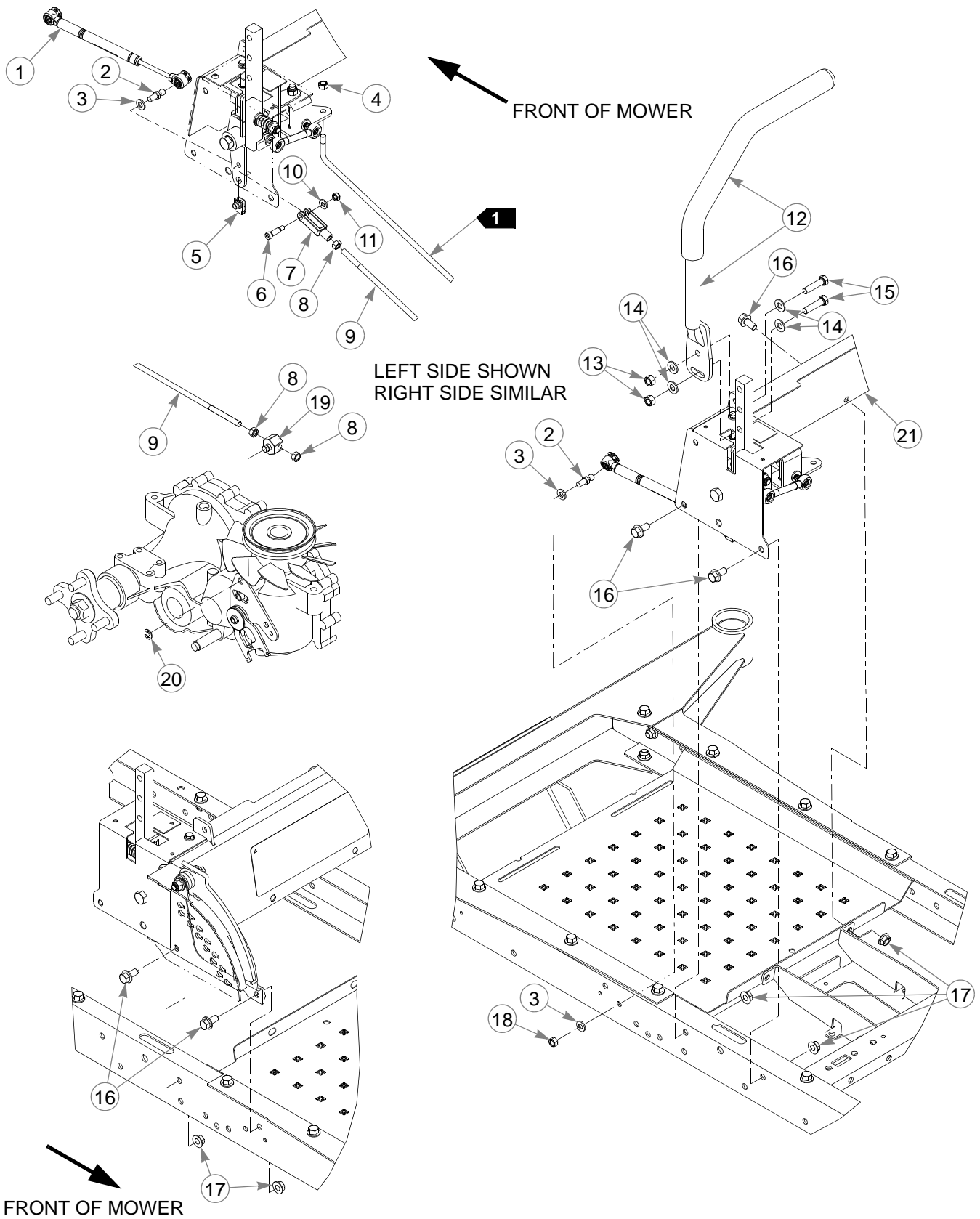
## **604709 LEFT SIDE TRANSMISSION**

<b>INDEX NO.</b>	<b>PART NO.</b>	<b>QTY.</b>	<b>DESCRIPTION</b>
1	604902	1	HG RTN CCW
2	604903	1	HG RTN SPRING
3	602094	1	FAN/PULLEY KIT
4	600974	1	RS FILTER GUARD (WITH HARDWARE)
5	600976	1	OIL FILTER
6	600970	1	4 BOLT HUB KIT (WITH HUB NUT)
7	601221	1	BRAKE ARM
8	600972	1	RETAINING CLIP

---

### **NOTES:**

# Steering & Brake



---

## **Steering & Brake**

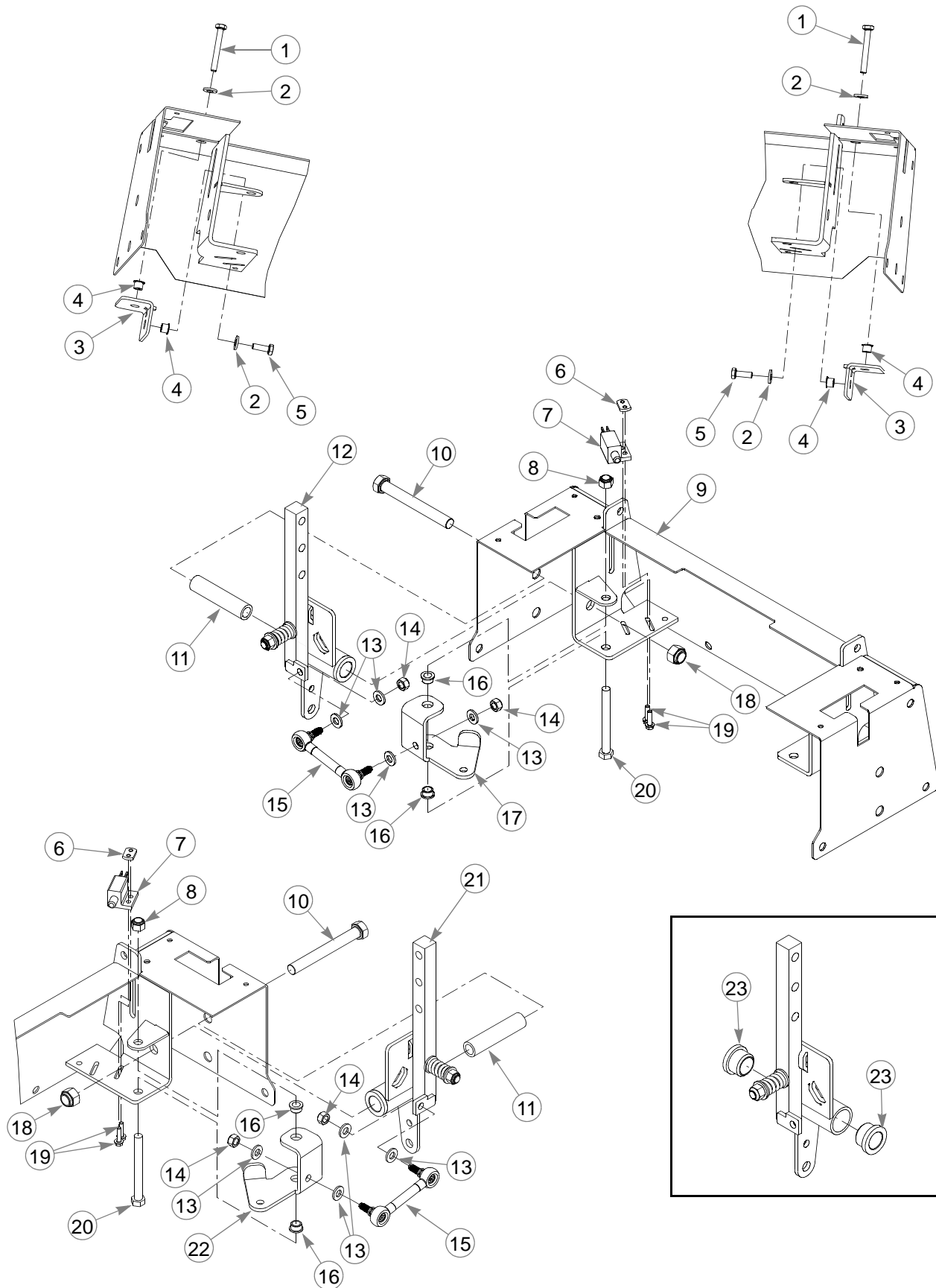
INDEX NO.	PART NO.	QTY.	DESCRIPTION
1	603983	2	DAMPER
2	781922	4	BALL STUD
3	768523	6	FW .343 X .687 X .051/.080H
4	058776	2	NT .312-18 HX ZY NL
5	601069	2	CN .312-18 X .20 MAX THK
6	772483	2	SB .312 X .75 SH .250-20
7	604173	2	YOKE, 5/16-24
8	041152	6	NT .312-24 HX ZNYC
9	604666	2	STEERING ROD
10	768515	2	FW .281 X .625 X .051/.080 HD ZN/YL
11	068551	2	NT .250-20 HX ZY NL
12	110370	2	STEERING BAR (WITH GRIP)
	781260	1	STEERING BAR GRIP
13	054502	4	NT .375-16 HX G5 ZNY
14	767954	8	FW .406 X .812 X .060 SAE
15	080655	4	CS .375-16 X 1.50 HX G5
16	029629	7	CS .375-16 X .75 HX FLK
17	016899	7	NT .375-16 HX FLK ZNYC
18	034272	2	NT .312-18 HX G5 ZNYC
19	116144	2	STEERING BUSHING
20	603332	2	CLIP
21	N/A	1	STEERING COVER ASSEMBLY

---

### **NOTES:**

1. Part of the transmission assembly.

# Steering Cover Assembly



---

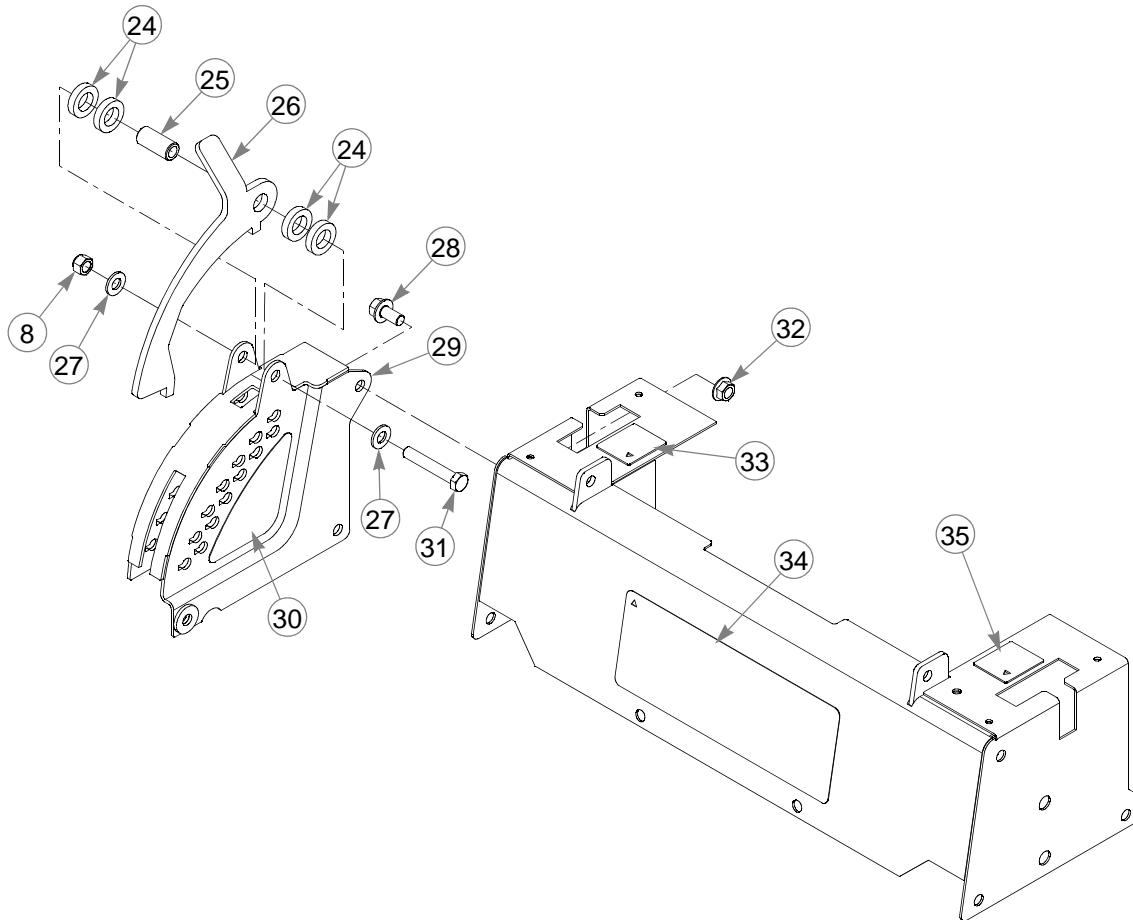
## **Steering Cover Assembly**

INDEX NO.	PART NO.	QTY.	DESCRIPTION
1	604452	2	CS .250-20 X 2.00 HX FLTHD
2	768515	4	FW .281 X .625 X .051/.080 HD ZN/YL
3	117540	2	DRIVE STRAIGHT STOP
4	808477	4	1/4-20 THREAD RIVET NUT
5	055939	2	CS .250-20 X .75 HX G5
6	601822	2	NUT PLATE .420 CENTERS
7	781211	2	PUSH BUTTON SWITCH
8	086660	3	NT .375-16 NL G5
9	552415	1	STEERING COVER (WITH DECALS)
10	781708	2	CS .500-13 X 4.25 HX G5
11	604288	2	STEERING SPACER
12	604300	1	LS STEERING BOX
13	768523	8	FW .343 X .687 X .051/.080H
14	058776	4	NT .312-18 HX NL G5
15	604179	2	BRAKE ROD
16	765339	4	BUSHING
17	116142	1	LS BRAKE BELLCRANK
18	781567	2	NT .500-13 NL G5
19	063198	4	CS 10-24 X .75 HX FLK ZN
20	005108	2	CS .375-16 X 3.50 HX G5 Z
21	604299	1	RS STEERING BOX
22	116141	1	RS BRAKE BELLCRANK
23	781153	4	BUSHINGS

---

### **NOTES:**

# Steering Cover Assembly





---

# **Steering Cover Assembly**

INDEX NO.	PART NO.	QTY.	DESCRIPTION
24	769257	4	FW .656 X 1.25 X .250 ZNY
25	604793	1	BUSHING
26	118479	1	TRANSPORT LATCH
27	767954	2	FW .406 X .812 X .060 SAE
28	029629	1	CS .375-16 X .75 HX FLK
29	552177	1	INDICATOR (WITH DECAL)
30	604819	1	DECK HEIGHT DECAL
31	056036	1	CS .375-16 X 2.25 HX G5
32	016899	1	NT .375-16 HX FLK ZNYC
33	785220	1	RS STEERING DECAL
34	604840	1	ID DECAL
35	785139	1	LS STEERING DECAL

---

## **NOTES:**

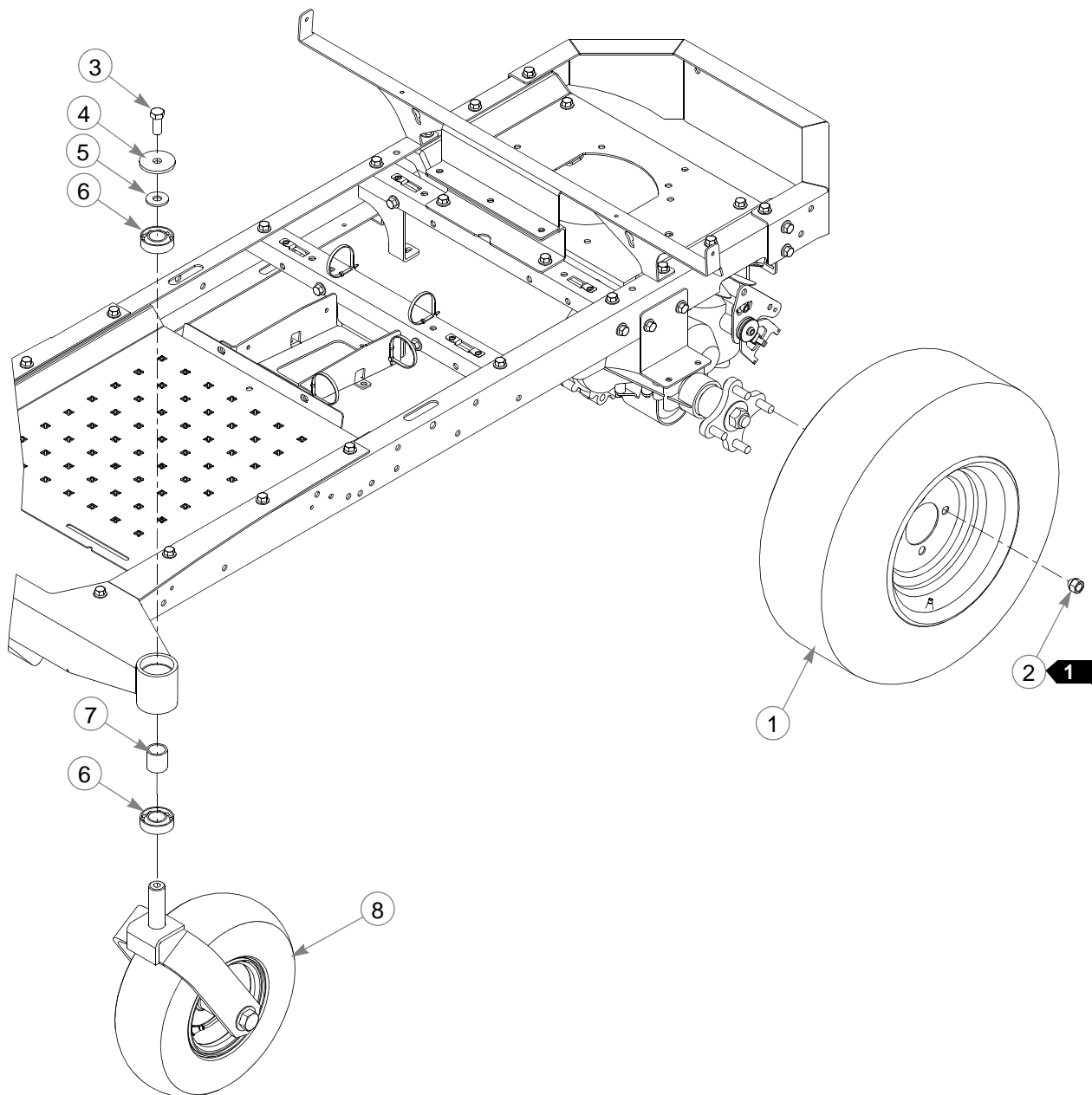


---

## Section 4

Wheel & Tire . . . . .	4-2
Front Tire Breakdown—13 X 5.0 . . . . .	4-4
Front Tire Breakdown—13 X 6.5 . . . . .	4-6
Drive Wheel Breakdown . . . . .	4-8

# Wheel & Tire



---

## **Wheel & Tire**

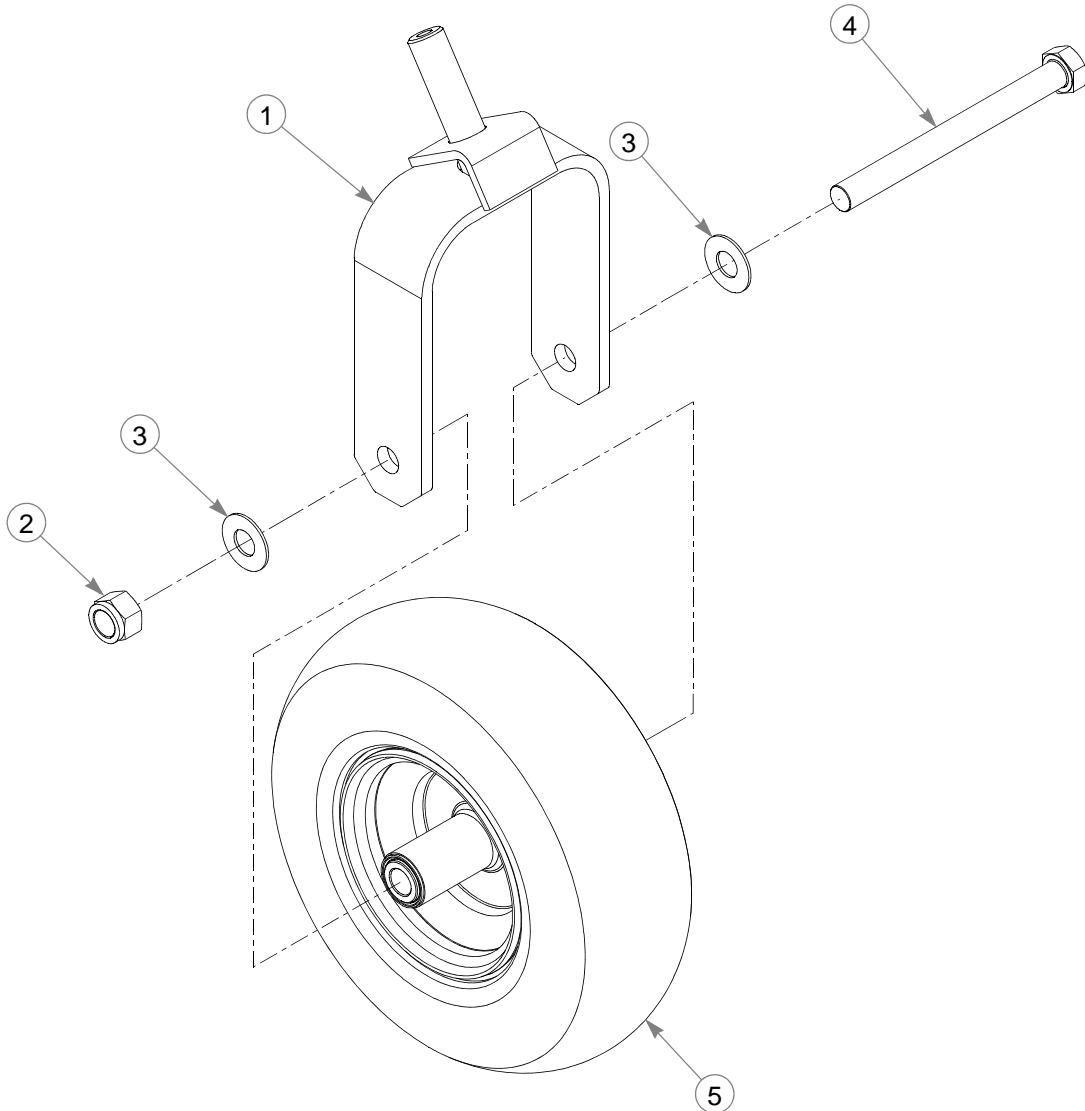
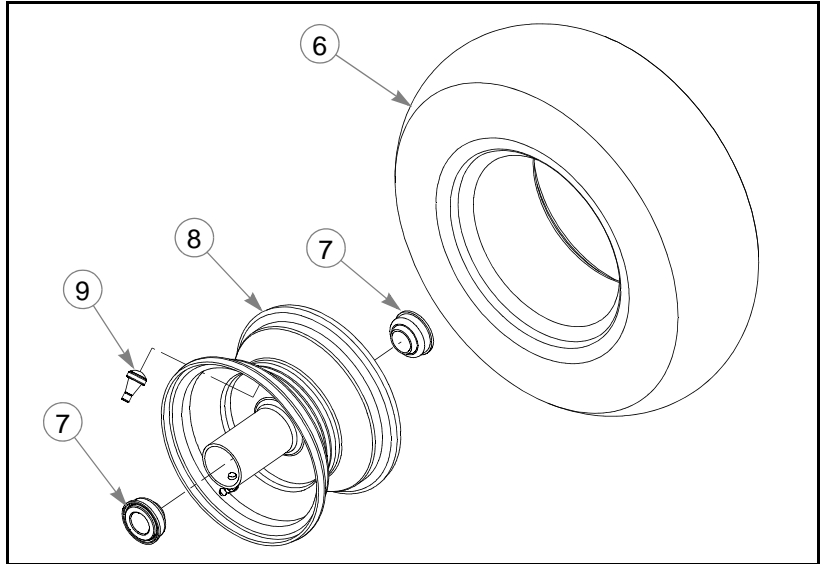
INDEX NO.	PART NO.	QTY.	DESCRIPTION
1	600676	2	TIRE/WHEEL 20 X 8-10
2	061077	8	WHEEL NUT
3	705954	2	CS .500-13 X 1.25 HX G5 ZN
4	344267	2	FW .510 X 2.15 X .187 SPL
5	712976	2	FW .531 X 1.375 X .125 ZNY
6	784223	4	BEARING
7	784603	2	SPACER
8	N/A	1	TIRE/WHEEL ASSEMBLY

---

### **NOTES:**

1. Torque to 88–102 N-m.

# Front Tire Breakdown—13 X 5.0



---

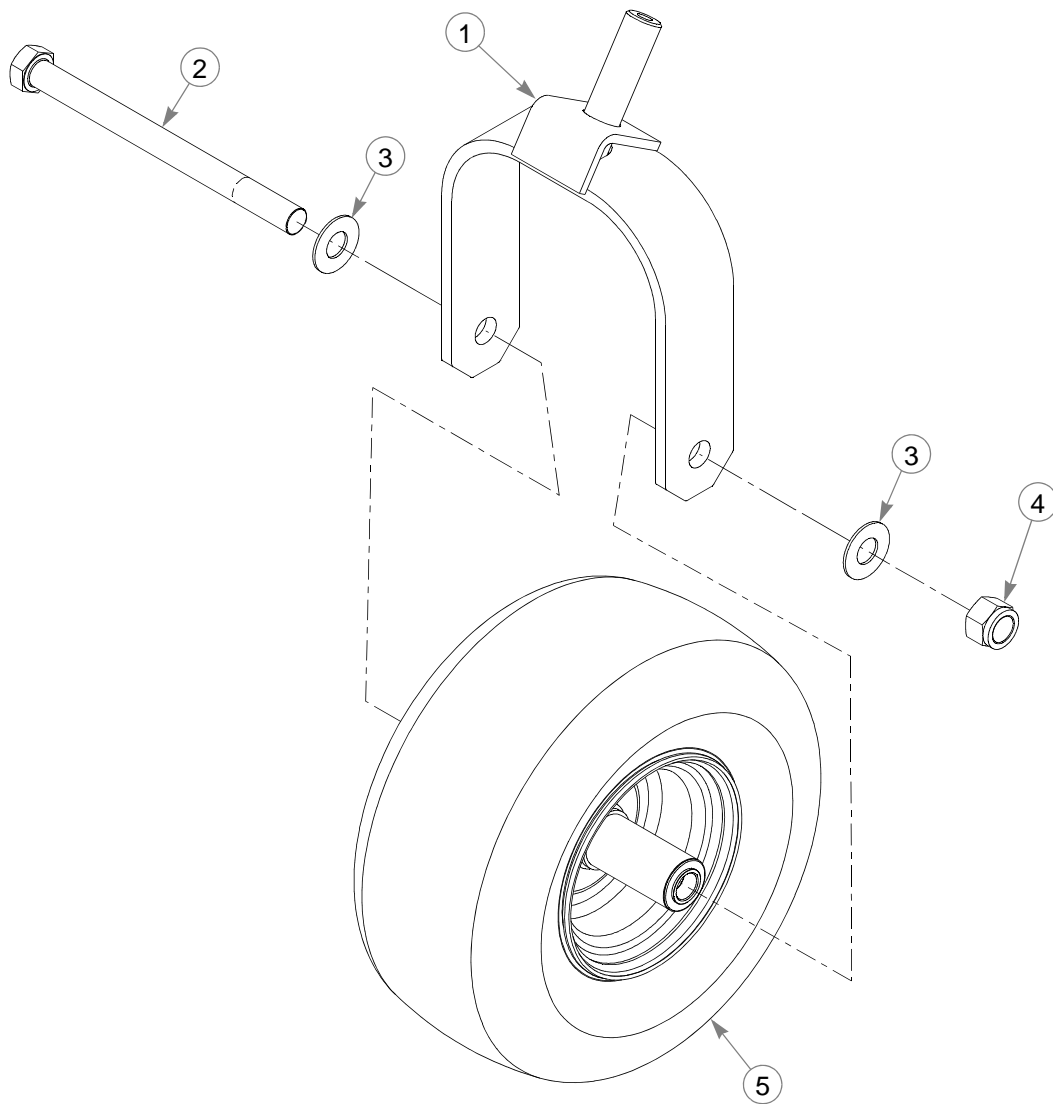
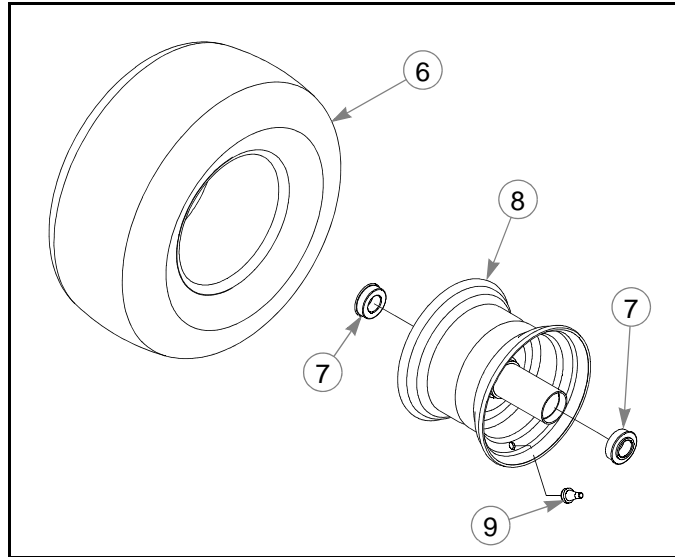
## **Front Tire Breakdown—13 X 5.0**

INDEX NO.	PART NO.	QTY.	DESCRIPTION
1	605042	1	FORK
2	061101	1	NT .750-10 HX ZY NL
3	025296	2	FW .760 X 1.625 X .08 ZNYC
4	786731	1	CS .750-10 X 8.00 HX G5
5	605038	1	TIRE/WHEEL ASSEMBLY 13 X 5.00
6	605039	1	TIRE 13 X 5.00
7	786103	2	WHEEL BEARING
8	786079	1	WHEEL
9	019521	1	TIRE VALVE

---

### **NOTES:**

# **Front Tire Breakdown—13 X 6.5**





---

## **Front Tire Breakdown—13 X 6.5**

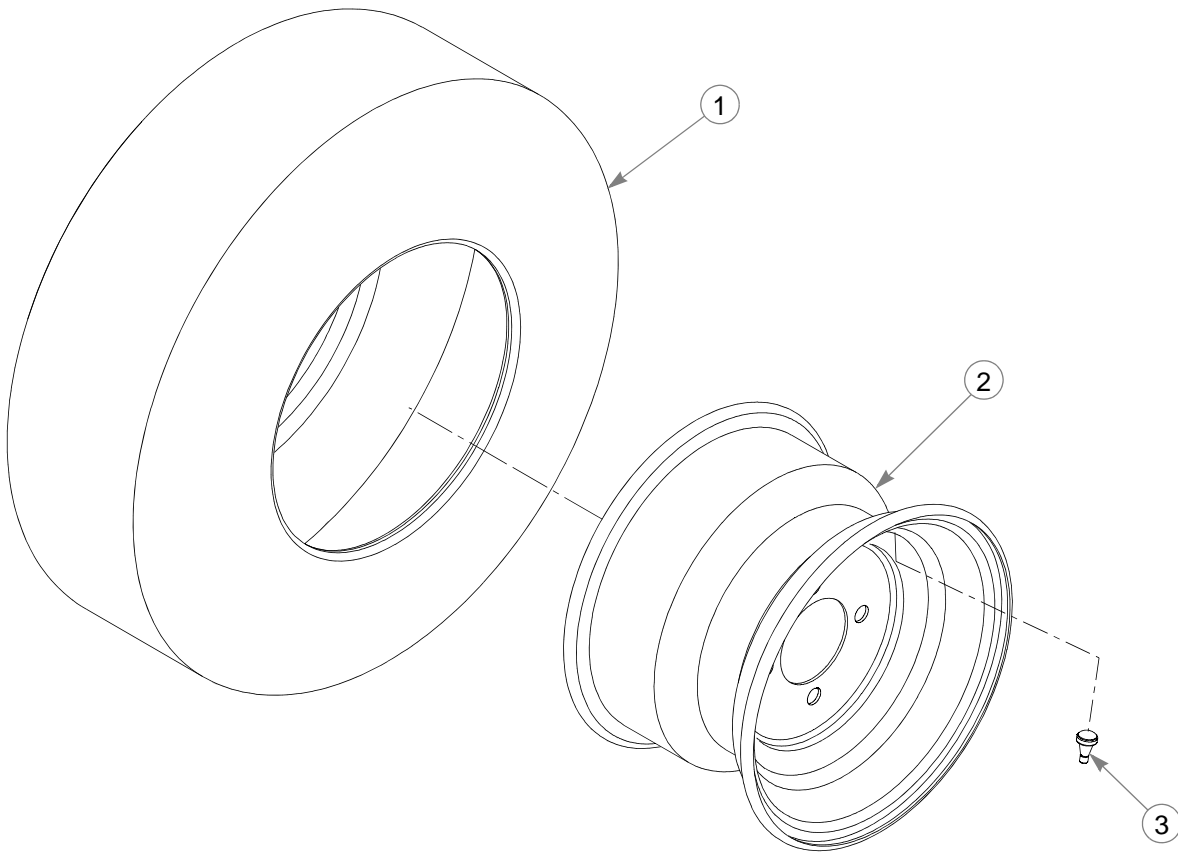
INDEX NO.	PART NO.	QTY	DESCRIPTION
1	604691	1	FORK
2	041475	1	CS .750-10 X 9.50 HX ZY
3	025296	2	FW .760 X 1.625 X .08 ZNYC
4	061101	1	NT .750-10 HX ZY NL
5	604717	1	TIRE/WHEEL
6	604843	1	TIRE, 13 X 6.50-6
7	604845	2	WHEEL BEARING
8	604844	1	WHEEL, 6 X 4.50
9	019521	1	VALVE STEM

---

### **NOTES:**

---

## **Drive Wheel Breakdown**



---

### **TIRE/WHEEL ASSEMBLY**

<b>INDEX NO.</b>	<b>PART NO.</b>	<b>QTY.</b>	<b>DESCRIPTION</b>
1	600692	1	TIRE 20 X 8-10
2	600718	1	WHEEL
3	019521	1	TIRE VALVE

---

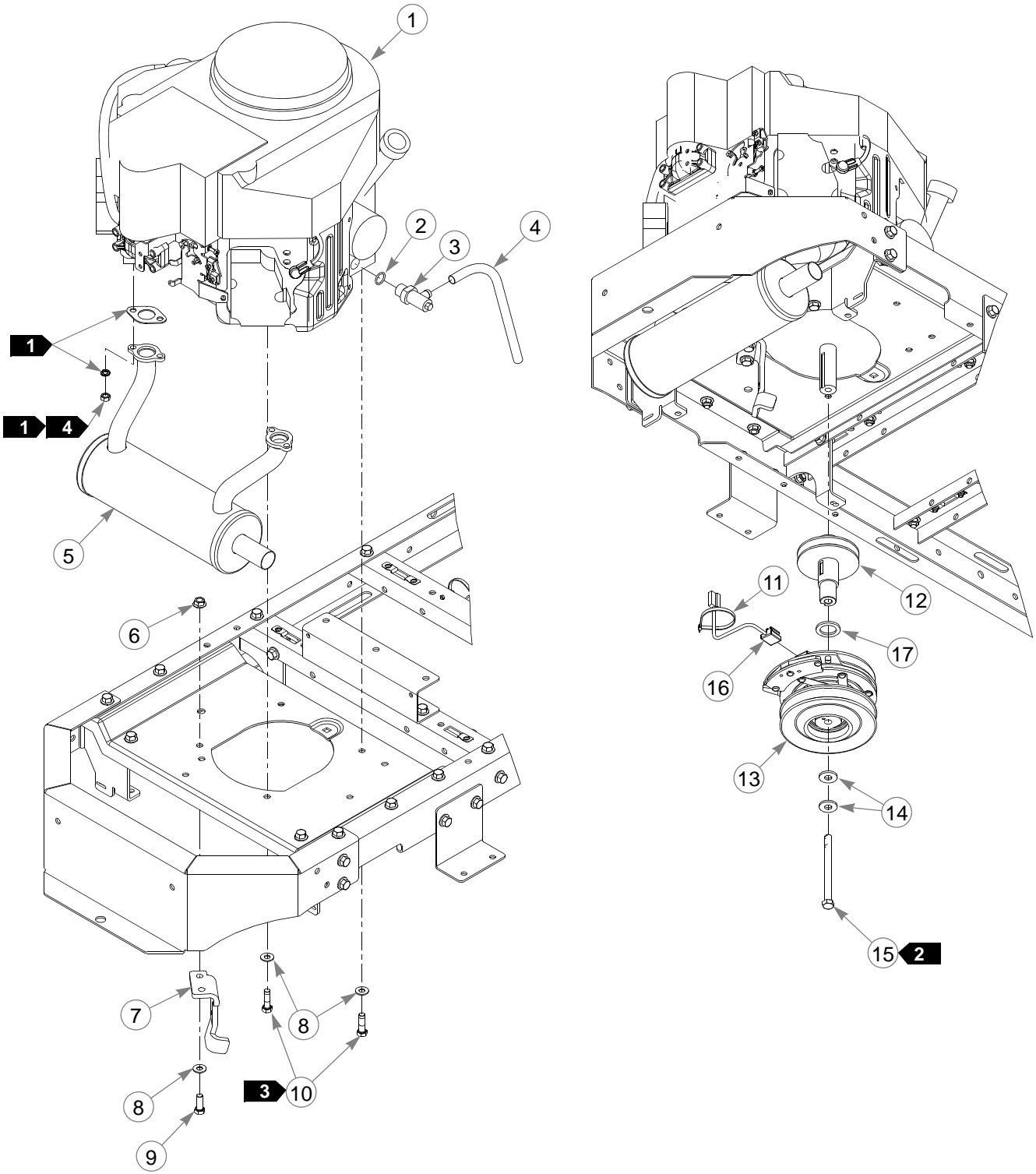
### **NOTES:**

---

## Section 5

Engine . . . . .	5-2
Engine Service Parts . . . . .	5-6
Fuel System . . . . .	5-8
Fuel Tank Service Parts . . . . .	5-10

# Engine



---

# **Engine**

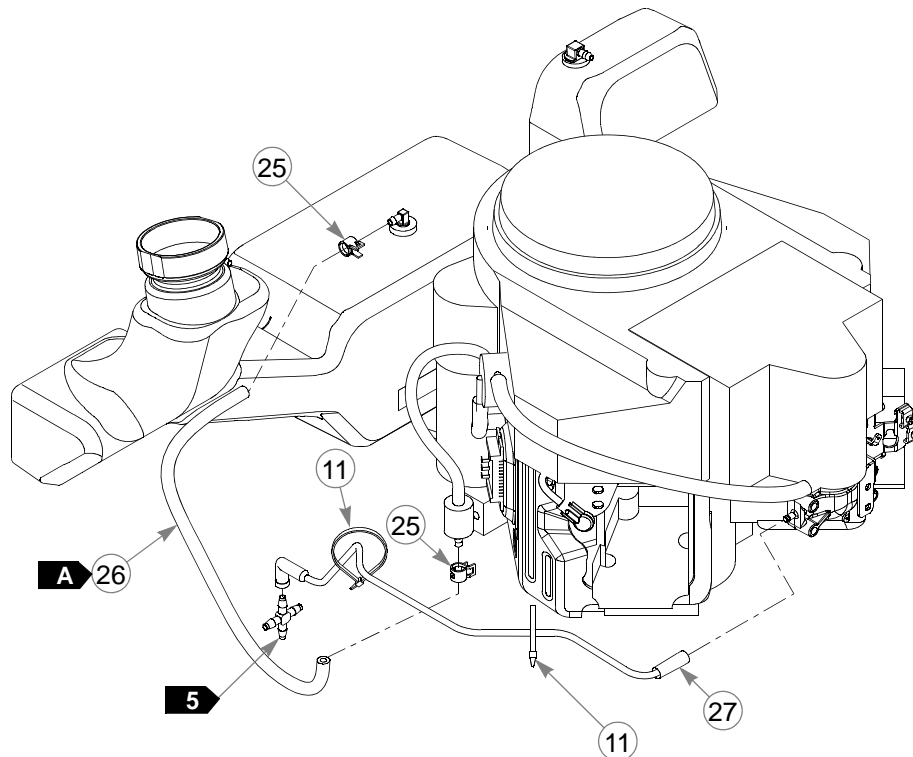
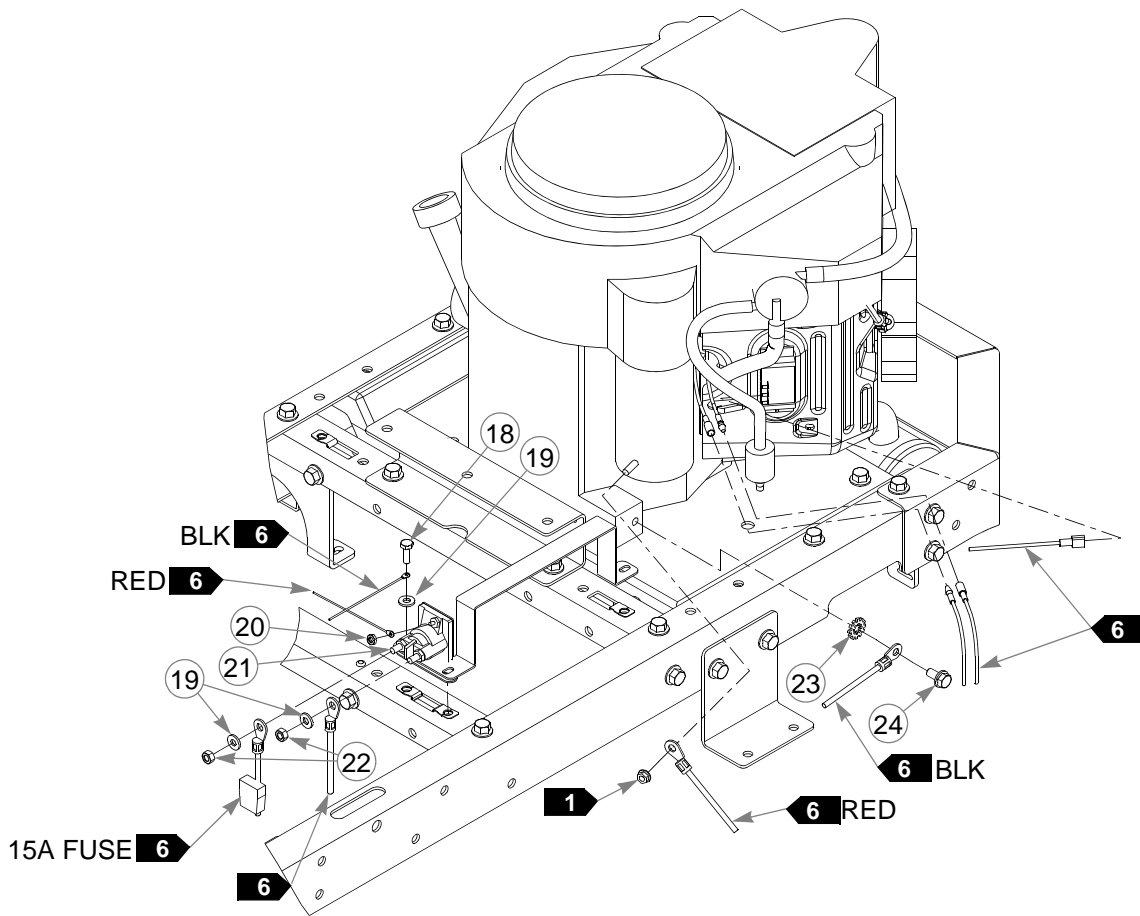
INDEX NO.	PART NO.	QTY.	DESCRIPTION
1	N/A	1	KAWASAKI /FR691V ENGINE
2	604369	1	O-RING
3	604350	1	OIL DRAIN VALVE
4	604463	30 cm	OIL DRAIN HOSE
5	604016	1	MUFFLER
6	016899	1	NT .375-16 HX FLK ZNYC
7	118238	1	CLUTCH ANCHOR
8	767954	5	FW .406 X .812 X .060 SAE
9	036244	1	CS .375-16 X 1.00 HX G5
10	602580	4	CS .375-16 X 1.25 HX G5 P85
11	000331	4	WIRE TIE
12	604712	1	STUB SHAFT PUMP PULLEY
13	604713K	1	CLUTCH KIT
14	602680	2	FW .453 X 1.12 X .119 HRD
15	604721	1	CS .437-20 X 5.00 HX G5
16	791251	1	CLUTCH HARNESS PIGTAIL
17	045765	1	FW 1.03 X 1.50 X 0.134

---

## **NOTES:**

1. Supplied with the engine.
2. Torque to 61–65 N-m. Replace (do not reuse) the cap screw if it's removed or loosened. Use only hand tools to install this fastener.
3. Torque to 41–47 N-m. Replace (do not reuse) the cap screw if it's removed or loosened. Use only hand tools to install this fastener.
4. Torque the nuts to 30 N-m.

# Engine




---

# **Engine**

INDEX NO.	PART NO.	QTY.	DESCRIPTION
18	055939	2	CS .250-20 X .75 HX G5
19	768515	4	FW .281 X .625 X .051/.080 HD ZN/YL
20	044255	1	NT #10-32 HX ZN
21	030817	1	STARTER SOLENOID
22	024927	2	NT .250-20 HX G5 ZNYC
23	029876	1	LW .312 INT-EXT TOOTH
24	720516	1	CS M8 X 1.25 X 16 HX G10.9
25	000323	2	HOSE CLAMP
26	015818	46 cm	1/4" FUEL LINE
27	604274	1	3/16" FORMED VAPOR LINE

---

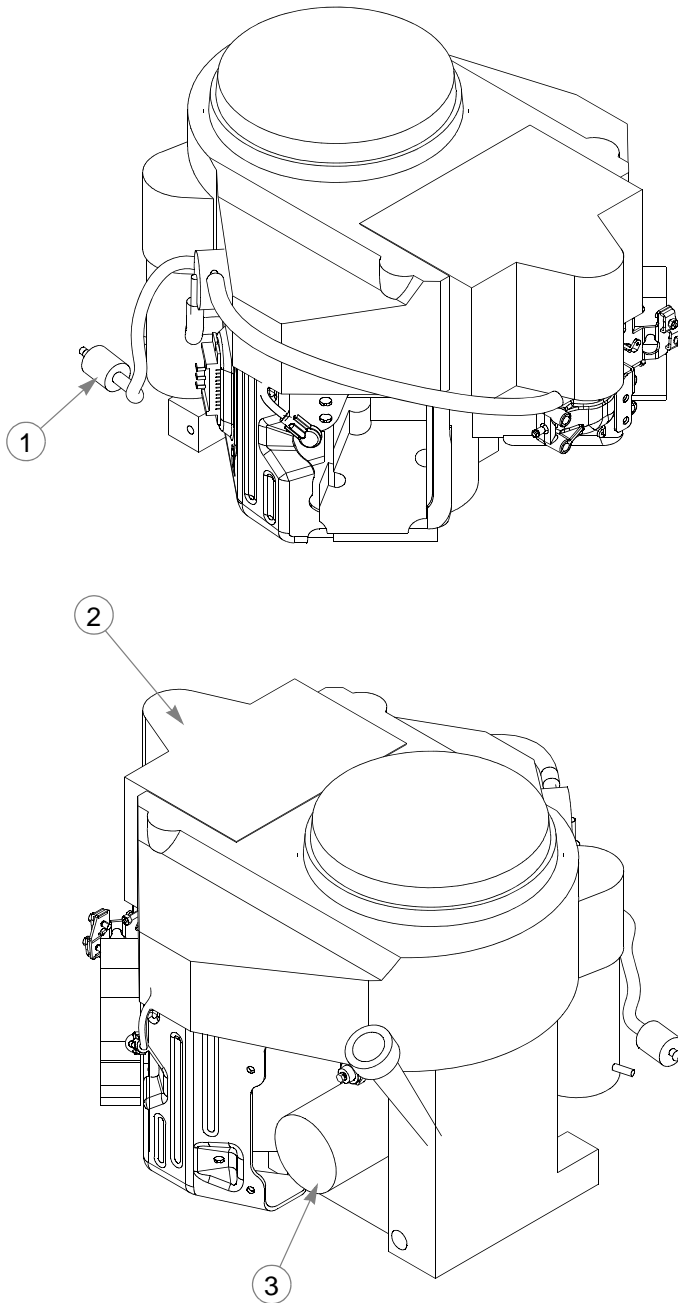
## **NOTES:**

<b>FUEL &amp; VAPOR LINE LENGTHS</b>		
	46 cm	TANK TO FUEL FILTER (FUEL)

- 5. Part of the fuel system.
- 6. Part of the wire harness.

---

## **Engine Service Parts**



---

INDEX NO.	PART NO.	QTY.	DESCRIPTION
1	068478	1	IN-LINE FUEL FILTER
2	603059	1	AIR FILTER
3	602581	1	OIL FILTER

---

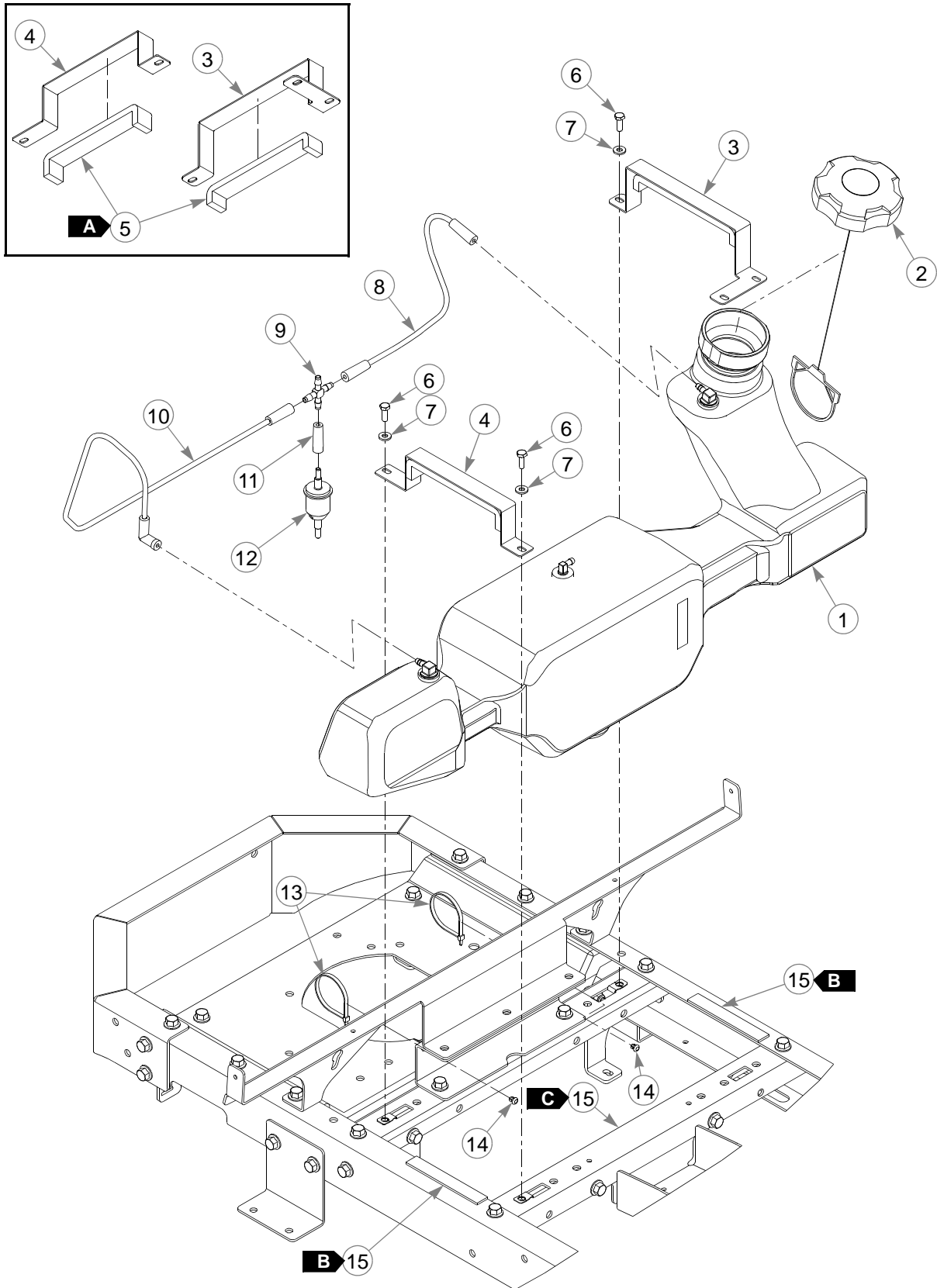
### **NOTES:**



---

**This page intentionally left blank.**

# Fuel System






---

# **Fuel System**

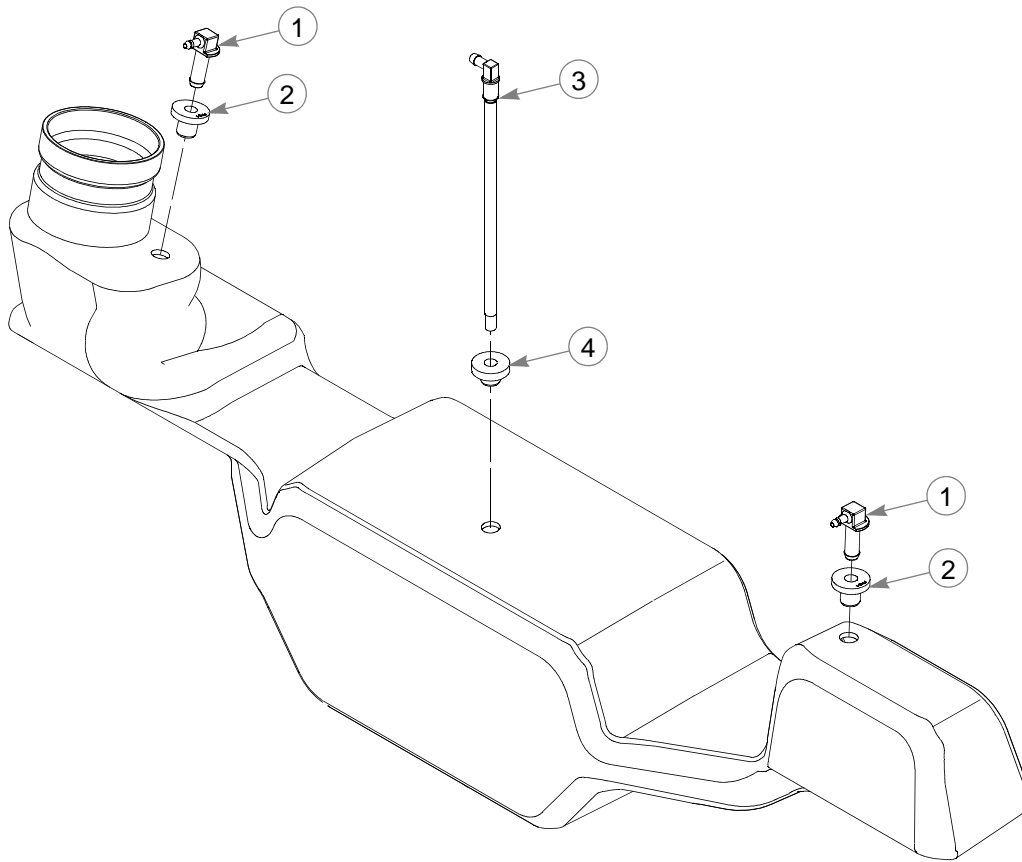
INDEX NO.	PART NO.	QTY.	DESCRIPTION
1	604336	1	FUEL TANK ASSEMBLY
2	603807	1	RATCHETING GAS CAP, 3.5"
3	117059	1	LEFT TANK MOUNT
4	117060	1	RIGHT TANK MOUNT
5	713198	47 cm	SEAL 3/8 X 3/4
6	055939	3	CS .250-20 X .75 HX G5
7	768515	3	FW .281 X .625 X .051/.080 HD ZN/YL
8	604279	1	3/16" FORMED VAPOR LINE
9	604322	1	1/4" HOSE BARB CROSS
10	604273	1	3/16" FORMED VAPOR LINE
11	604292	1	BOOT, 3/16" TO 1/4" BARB
12	604323	1	VAPOR SYSTEM FILTER
13	000331	2	WIRE TIE
14	604307	2	PUSH BUTTON MOUNT
15	033035	56 cm	WEATHERSTRIP

---

## NOTES:

WEATHERTRIP LENGTH	
<b>A</b> 	23.5 cm
<b>B</b> 	13 cm
<b>C</b> 	30 cm

# **Fuel Tank Service Parts**



---

INDEX NO.	PART NO.	QTY.	DESCRIPTION
1	604199	2	VENT FITTING
2	604200	2	GROMMET
3	604340	1	SUCTION HOSE ASSEMBLY 7.75"
4	785295	1	GROMMET

---

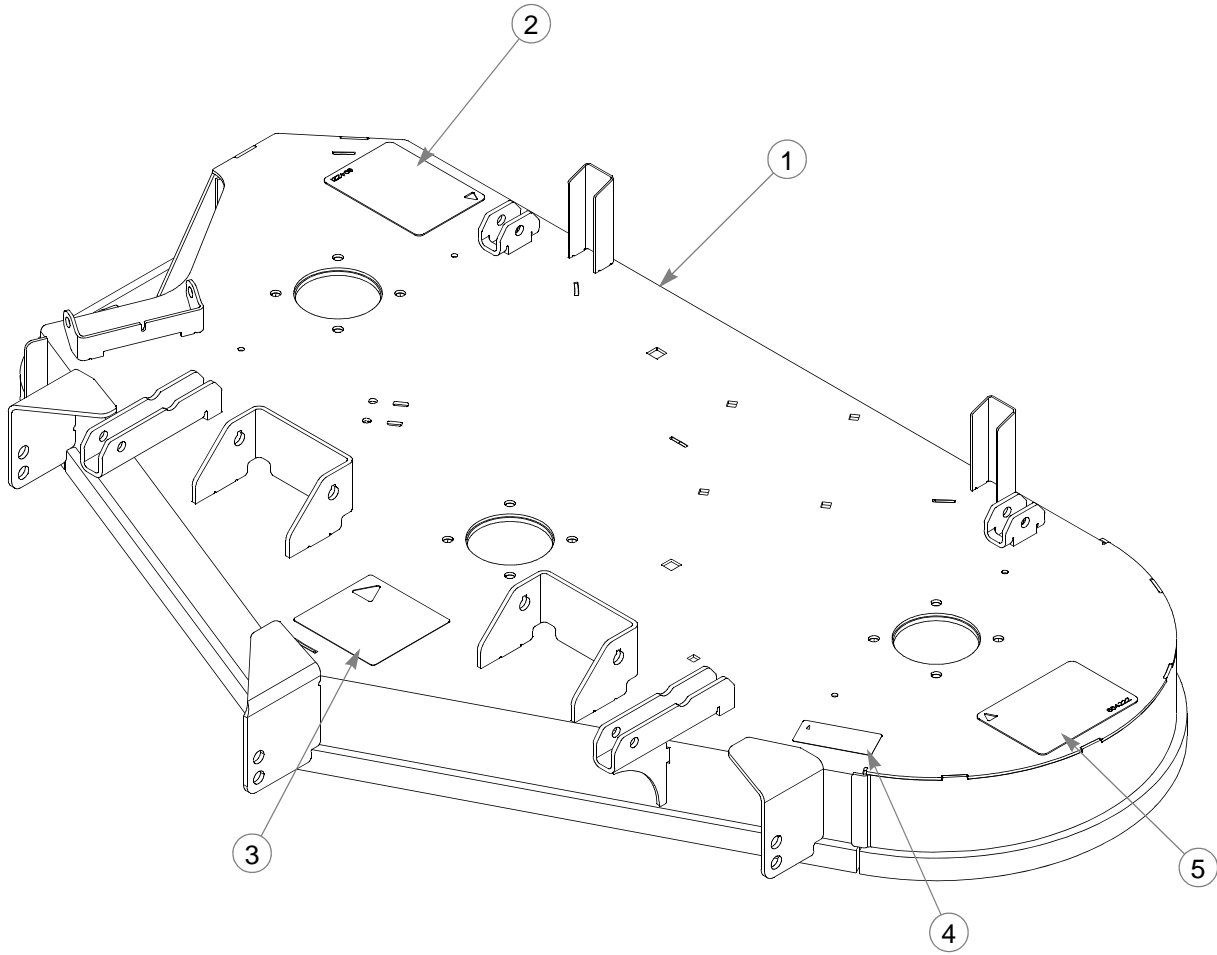
## **NOTES:**

---

## Section 6

48" Service Deck . . . . .	6-2
48" Deck Pulleys & Spindles . . . . .	6-4
48" Deck . . . . .	6-6
Deck Lift—Right Side. . . . .	6-8
Deck Lift—Left Side. . . . .	6-10

# **48" Service Deck**



---

INDEX NO.	PART NO.	QTY.	DESCRIPTION
1	552267	1	48" DECK (WITH DECALS)
2	604221	1	DANGER/CHUTE DECAL
3	781419	1	BELT ROUTING DECAL
4	793976	1	48" DECK DECAL
5	604222	1	DANGER/OBJECTS DECAL

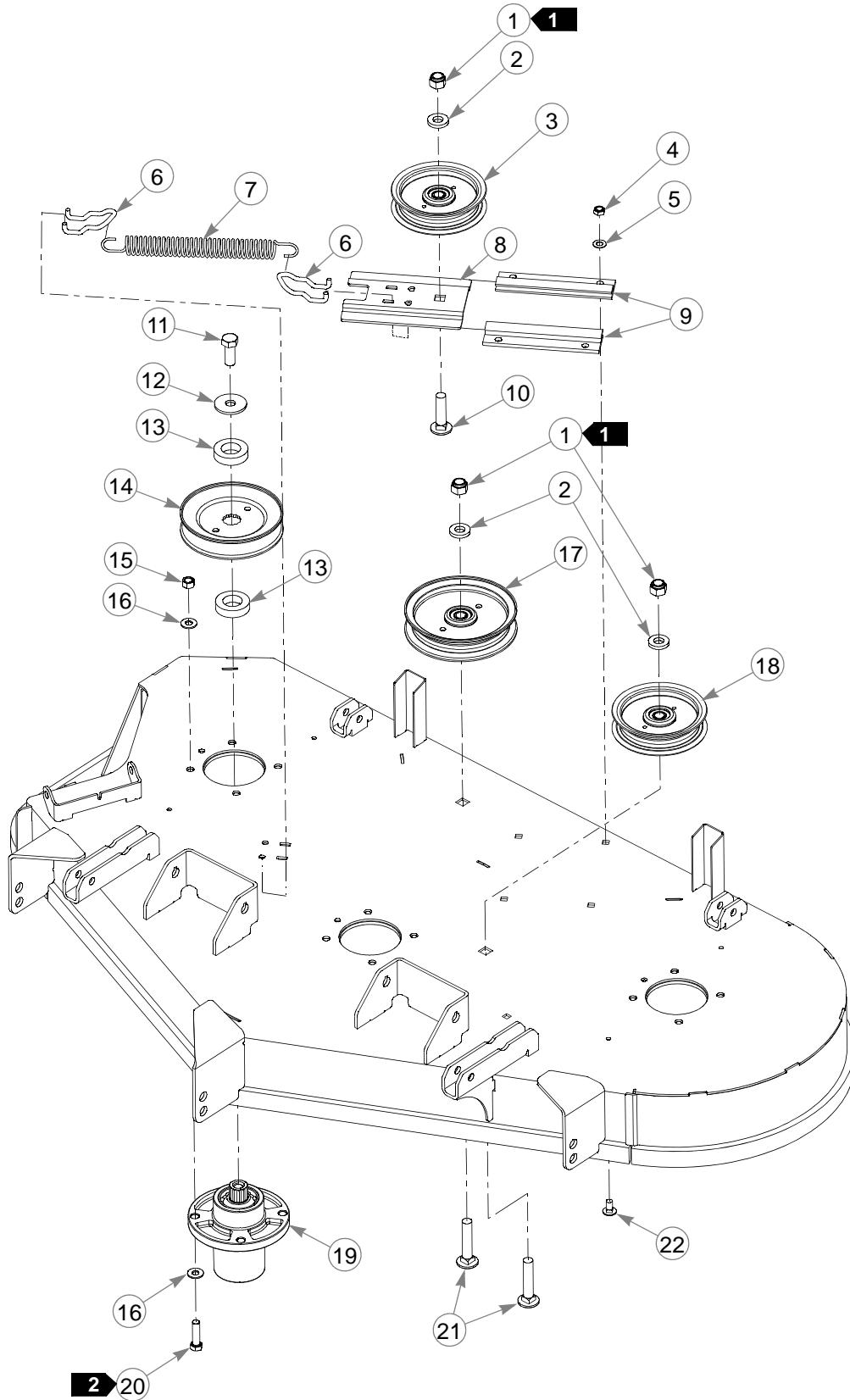
---

## **NOTES:**

---

**This page intentionally left blank.**

# 48" Deck Pulleys & Spindles





---

## **48" Deck Pulleys & Spindles**

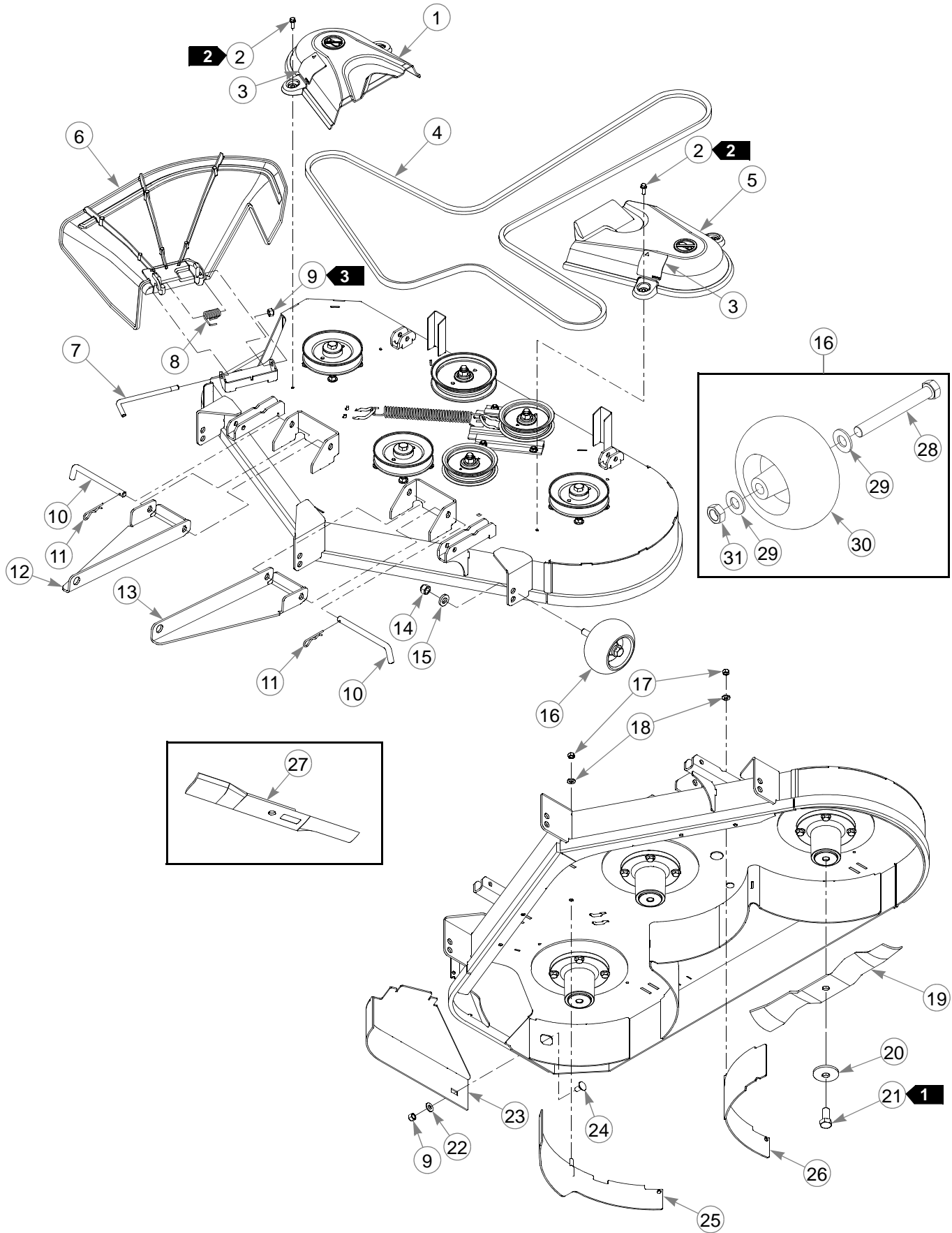
INDEX NO.	PART NO.	QTY.	DESCRIPTION
1	781567	3	NT .500-13 NL G5
2	767962	3	FW .531 X 1.063 X .090 SAE
3	603986	1	IDLER PULLEY, 4.00" FLAT
4	604251	4	NT .312-18 HX NL JAM G2 ZN
5	604252	4	FW .340 X .675 X .035 ZN
6	604110	2	SPRING TENSIONER ANCHOR
7	604291	1	IDLER SPRING
8	604194	1	IDLER SLED
9	604079	2	IDLER SLIDE
10	604253	1	CB .50-13 X 2.00 STD ZN
11	705954	3	CS .500-13 X 1.25 HX G5 ZN
12	798603	3	FW .515 X 1.65 X .125 HD ZY
13	604661	6	PULLEY SPACER
14	604665	3	DRIVE PULLEY B-SEC
15	054502	12	NT .375-16 HX G5 ZNY
16	767954	24	FW .406 X .812 X .060 SAE
17	604231	1	IDLER PULLEY, 5.00" O.D.
18	604219	1	IDLER PULLEY, 4.00" FLAT
19	601804	3	SPINDLE ASSEMBLY
20	005116	12	CS .375-16 X 1.375 HX G5
21	604254	2	CB .50-13 X 2.50 STD ZN
22	083147	4	CB .312-18 X .620 G5 ZN

---

### **NOTES:**

1. Torque to 99 N-m.
2. Torque to 41 N-m.

# 48" Deck



---

## **48" Deck**

INDEX NO.	PART NO.	QTY.	DESCRIPTION
1	552613	1	RS PULLEY COVER (WITH DECAL)
2	604324	4	CS .250-20 X .75 HX FLG
3	602562	2	DO NOT SERVICE DECAL
4	604830	1	BELT, B-SECTION
5	552614	1	LS PULLEY COVER (WITH DECAL)
6	604609	1	DISCHARGE CHUTE
7	604346	1	DISCHARGE CHUTE PIN
8	604331	1	CHUTE SPRING
9	086660	2	NT .375-16 NL G5
10	604658	2	PULLER PIN
11	017301	2	HP .125 X 2.375 ZN
12	117877	1	RS PULLER
13	117878	1	LS PULLER
14	781567	3	NT .500-13 NL G5
15	767962	3	FW .531 X 1.063 X .090 SAE
16	788166	3	PLASTIC WHEEL ASSEMBLY
17	058776	2	NT .312-18 HX NL G5
18	604252	2	FW .340 X .675 X .035 ZN
19	796623	3	BLADE, 16.50"-MUL-F-CW
20	782474	3	CW .631 X 2.25 X .187 PNT
21	781872	3	CS .625-11 X 1.25 HX G5 Z
22	767954	1	FW .406 X .812 X .060 SAE MULCH
23	119066	1	CLOSE OFF
24	011320	1	CB .375-16 X .75 STD ZN CENTER
25	119104	1	MULCH WRAPPER LEFT MULCH
26	119102	1	WRAPPER
27	601123	3	BLADE, 16.50"-L-F-CW
	796623	3	BLADE, 16.50"-MUL-F-CW BLADE,
	795757	3	F16.50"-H-F-CW
	796631	3	BLADE, 16.50"-GAT-F-CW BLADE,
	796649	3	16.50"-CAT-F-CW
28	781708	1	CS .500-13 X 4.25 HX G5
29	767962	2	FW .531 X 1.063 X .090 SAE
30	031997	1	PLASTIC WHEEL
31	053199	1	NT .500-13 HX JAM ZNYC

---

### **NOTES:**

1. Torque to 160 N-m.
2. Torque to 11 N-m on these 4 self-tapping screws.
3. Do not torque the nut; the discharge chute must pivot freely.



---

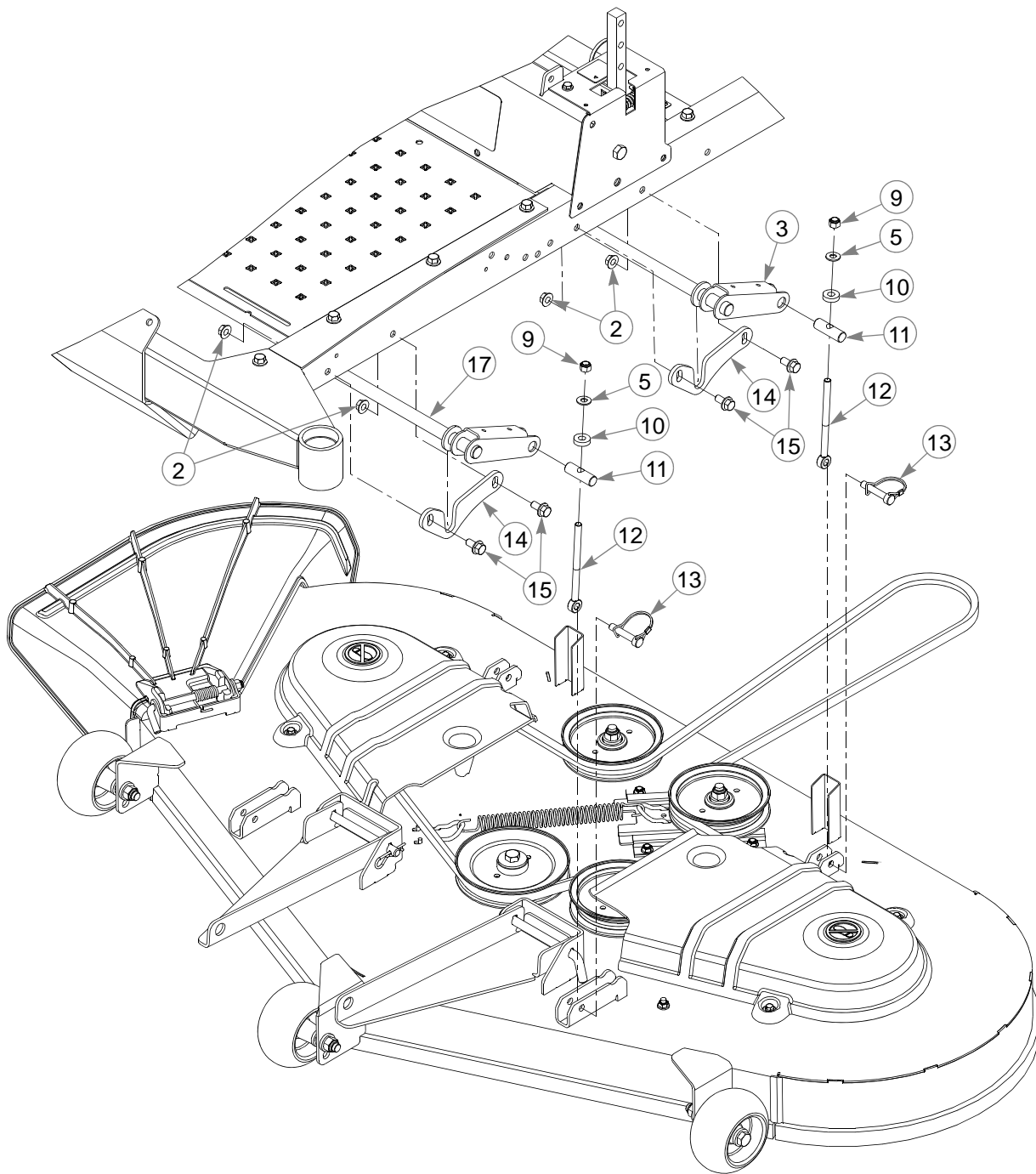
## **Deck Lift—Right Side**

INDEX NO.	PART NO.	QTY.	DESCRIPTION
1	118020	1	INDICATOR PIN
2	016899	8	NT .375-16 HX FLK ZNYC
3	118085	1	REAR DECK LIFT BAR
4	054502	2	NT .375-16 HX G5 ZNY
5	767954	8	FW .406 X .812 X .060 SAE
6	601839	2	PIVOT SPACER BUSHING
7	118016	1	LIFT PEDAL LINK
8	052860	1	CS .375-16 X 1.25 HX G5
9	086660	4	NT .375-16 NL G5
10	605114	4	FW .41 X .94 X .25 UHMW
11	118018	4	PIVOT
12	604579	4	DECK LIFT LINK
13	604803	4	CE .375 X 2.00 W/BALE
14	116151	4	PIVOT BLOCK
15	029629	8	CS .375-16 X .75 HX FLK
16	036244	1	CS .375-16 X 1.00 HX G5
17	118084	1	FRONT DECK LIFT BAR
18	604656	2	PIVOT SPACER BUSHING
19	767962	4	FW .531 X 1.063 X .090 SAE
20	781567	2	NT .500-13 NL G5
21	074252	2	CS .500-13 X 1.50 HX G5

---

### **NOTES:**

## Deck Lift—Left Side

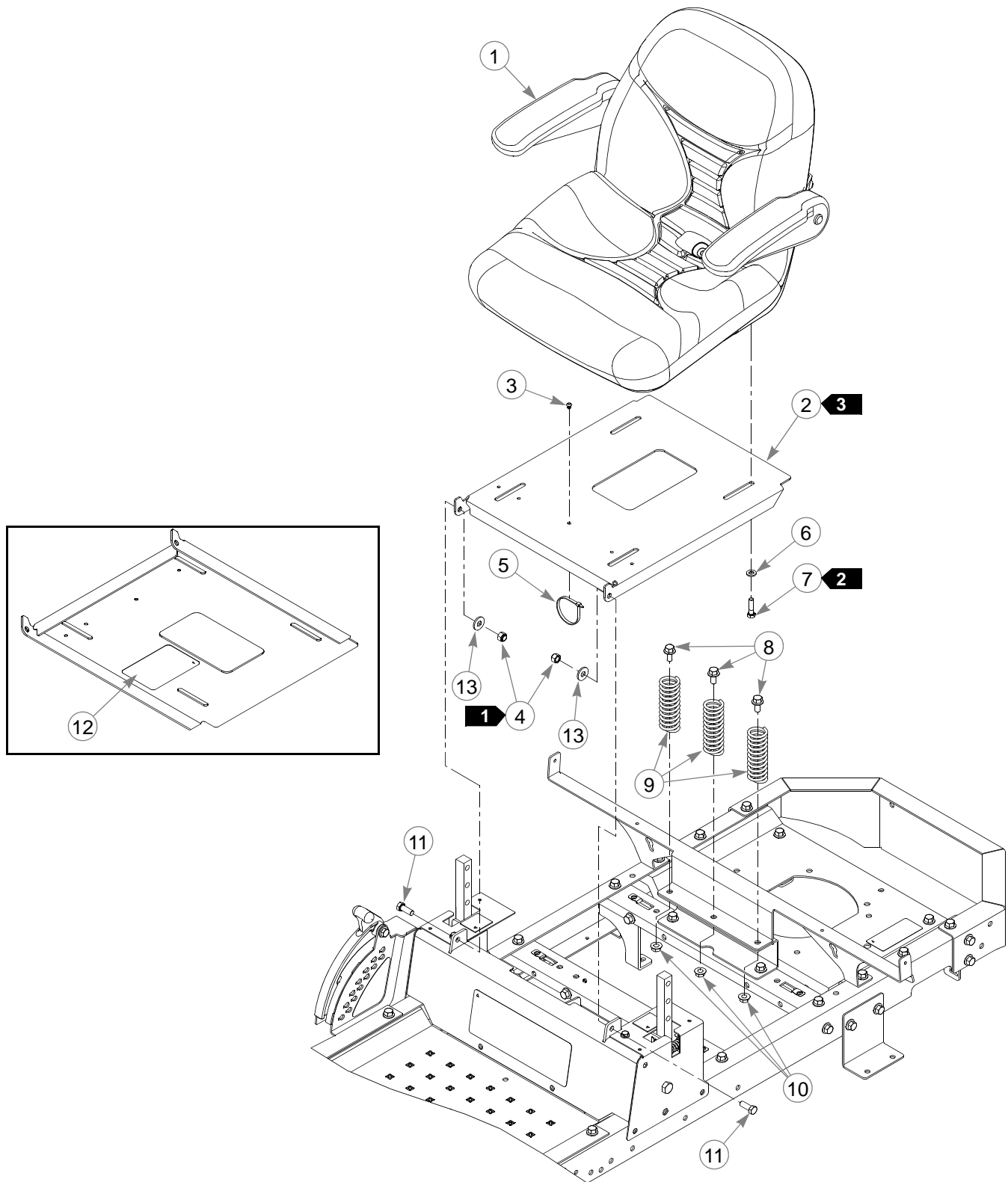


---

## Section 7

Seat .....	7-2
Seat Service Parts .....	7-4

# Seat





---

# **Seat**

INDEX NO.	PART NO.	QTY.	DESCRIPTION
1	792226	1	STANDARD SEAT
2	552751	1	SEAT PAN (WITH DECAL)
3	604307	1	PUSH BUTTON MOUNT
4	086660	2	NT .375-16 HX NL G5
5	000331	1	WIRE TIE
6	768523	4	FW .343 X .687 X .051/.080H
7	079186	4	CS .312-18 X 1.25 HX G5
8	029629	3	CS .375-16 X .75 HX FLK
9	793851	3	COMPRESSION SPRING 1.25 X 4.00 X .188
10	016899	3	NT .375-16 HX FLK ZNYC
11	036244	2	CS .375-16 X 1.00 HX G5
12	601815	1	BATTERY WARNINGS DECAL
13	704726	2	FW .406 X 1.00 X .105 ZNYC

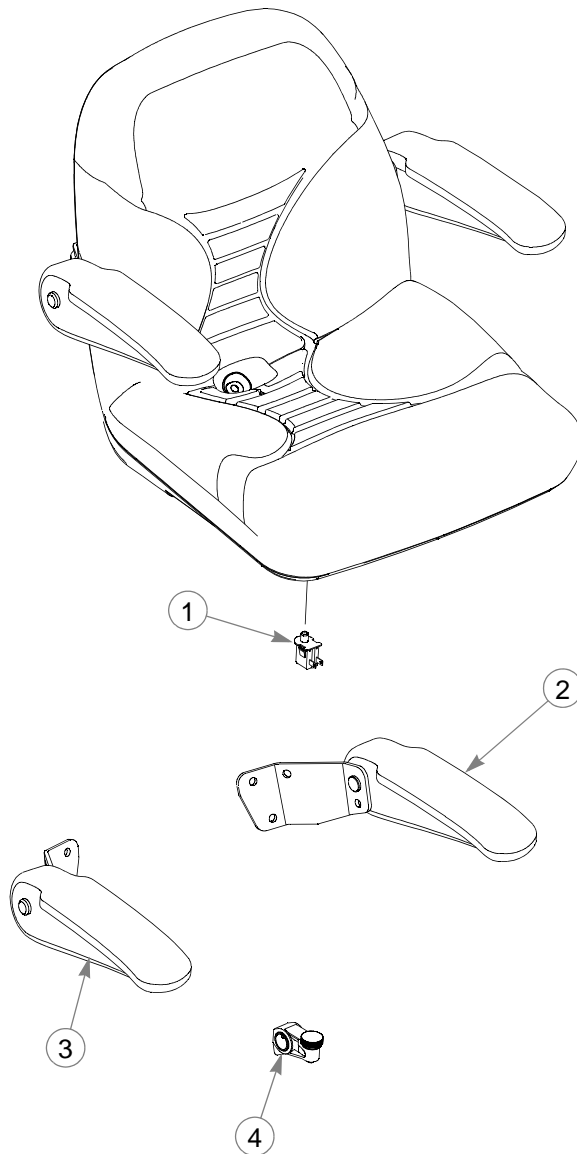
---

### **NOTES:**

1. Do not torque; the seat pan must pivot freely.
2. Torque to 9.5 N-m.
3. When replacing the seat pan, order (2) washers (item 13).

---

## **Seat Service Parts**



---

INDEX NO.	PART NO.	QTY.	DESCRIPTION
1	793315	1	SEAT SWITCH
2	604458	1	LS ARMREST KIT
3	604459	1	RS ARMREST KIT
4	793273	1	ARMREST STOP ASSEMBLY

---

### **NOTES:**